

# Mississippi Clubwoman



Volume LXXII, Number 3

Fall/Winter 2023



The mission of the GFWC-Mississippi Federation of Women's Clubs, Inc. is an organization of women whose goal is personal enrichment leading to volunteer service that benefits the community, state, nation and world.

Founded on May 25, 1898 and a member of the General Federation of Women's Clubs Since 1904.

## CONTENTS

Messages from State President.....	3
Golden Book Award .....	4
Message from President-elect.....	5
Message from Vice President.....	6
Prayer Request .....	7
Search-A-Word Puzzle.....	8
Fine Arts Club of Bruce Celebrates.....	9
2023 Christmas Events sponsored by MFWC Clubs.....	11
Search-A-Word Puzzle.....	15
Mississippi Pubic Broadcasting .....	16
Hugh O'Brian Youth Leadership (HOBY).....	17
Education and Libraries CSP .....	18
Search-A-Word Puzzle.....	19
GFWC National Day of Service.....	20
Search-A-Word Puzzle.....	23
Recap of 2023 Southern Region Conference a Biloxi, MS.....	24
Search-A-Word Puzzle.....	32
Club Resources .....	33
Announcements and Upcoming Events .....	34
Deadlines Approaching.....	35
Dues Form.....	36
Notes .....	37
General Federation of Women's Clubs News	
2024 GFWC Annual Convention .....	39
GFWC Holiday Open House.....	40
2024 Southern Region Conference.....	41
Looking Forward to 2024.....	41
GFWC Clubwoman Magazine Available.....	42

### Article Deadlines:

Spring 2024

February 12, 2024

## Mississippi Clubwoman Volume LXXIII, Number 3, Fall Issue

Editor: Lisa A. Harris  
822 SCR 115 S  
Raleigh, MS 39153  
601-940-1519  
lisaharris@outlook.com

Circulation Editor, Assistant Editor, Handbook Editor,  
Website Chair and MCT Coordinator:  
Lisa A. Harris

GFWC-MFWC State President:  
Theresa Buntyn  
P. O. Box 355  
Decatur, MS 39327  
601.685.9550 - c  
mfwctab@gmail.com

Website: [www.gfwc-mfwc.com](http://www.gfwc-mfwc.com)

Official Publication:  
Mississippi Clubwoman

- ◆ Please send **ALL ADDITIONS (with DUES)** of your club roster directly to State Treasurer Becky W. Watkins, P. O. Box 749, Quitman, MS 39355. She will, in turn, forward to Circulation Editor, Lisa A. Harris.
- ◆ Please send **ALL DELETIONS AND CHANGES** of your club roster directly to Circulation Editor, Lisa A. Harris.

**GFWC Mission Statement** "The General Federation of Women's Clubs is an international organization dedicated to community improvement through volunteer service and to providing opportunities that strengthen the role of women."

**MFWC Mission Statement** "The Mississippi Federation of Women's Clubs, Inc. is an organization of women whose goal is personal enrichment leading to volunteer service that benefits the community, state, nation and world."





## *Message from Your State President*

### *Theresa Buntyn*



Theresa Buntyn,  
President 2022-2024

As we approach the holiday season, I want each of you to know that I am so thankful for you and the hard work that you have done to improve education in your communities. I have realized your impact by successfully implementing programs and projects that have enhanced your communities and made a significant difference in public libraries, education, and literacy. As I am more involved in your clubs, I am eager to learn and read your reports on the different projects and programs. It has been my pleasure to attend several club meetings around the state. I have learned so many different ideas as I get to speak to many club women that I have never met. The MFWC officers are always excited to come to your club. Give us a call.

Within the past few weeks, we have had several great Federation activities. First, I want to resound the thanks that President-elect Dr. Carolyn S. Tedford has already conveyed for the success of the GFWC Southern Region Conference in Biloxi with the "Magic of Mississippi." I am so honored that fifty-three women from Mississippi participated in this event. I was thrilled to carry 844 books and donate a check for \$1100 raised at Junior Fun Night for our libraries up north that suffered damage from the tornados in early spring. You ladies hosted our event with grace and volunteerism, which made our conference a success. Thank you.

Meri Newell, Vice President and Dean of Chairman, has done an outstanding job this administration to ensure that all of our clubs are educated about the importance of reporting and how it makes a difference to show the exceptional volunteerism done by members in our great state. Meri has taught the chairman and our members the need to report, including challenging areas, and how to ensure our reports are in the correct categories. If you are unsure where to report a program or project, please contact Meri or me. If we do not know, we will find out. Lisa will have the MFWC reporting form, including the score card online before Christmas, and we encourage you to complete the form and attach a narrative. We need to Report and share your volunteer effects on how your clubs remain successful in their communities. Remember to include any organizations that your club partnered with this year.

Please know that I am amazed and appreciate all the activities you have undertaken to promote our public libraries, education, and literacy. You ladies genuinely understand volunteerism and will continue to make a difference in our communities. MFWC ladies show their purpose and why by always making a difference and living the Volunteer Spirit.

Once again, I appreciate your efforts and know your generosity and kindness will touch many lives. As always, if I can help you in any way, feel free to contact me; it is my pleasure to serve as your president.

In Federation Love,  
Theresa Buntyn  
GFWC-MFWC State President





# MFWC & Theresa Buntyn Awarded Golden Book Award

## Nomination for **Golden Book Award** **Theresa Buntyn, President of Mississippi Federation of Women's Clubs 2022 – 2024**

I respectfully submit my nomination of Theresa Buntyn, President of the Mississippi Federation of Women's Clubs for the Golden Book Award.

In my position as Branch Manager of the Jesse Yancy Memorial Library in Bruce, MS, I have seen first-hand the countless ways the Women's Clubs of Mississippi can assist Librarians to reach more patrons and provide more services to them with their volunteer spirit.

With the great leadership of Theresa Buntyn, the entire MFWC is especially enthused about Public Libraries. Since the theme of her President's Special Project is: "Bloom Where You Are Planted - Getting Back To Our GFWC Roots by promoting public libraries, education, and literacy", she is focusing on Public Libraries in Mississippi.

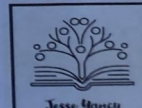
Some (only a few of MANY) of her efforts:

- Urged Libraries to celebrate Library Card Sign-Up Month in Sept. (Eupora Junioresettes)
- Encouraged Libraries to decorate a car or float in the Christmas parades. (Decatur)
- State convention service project "BIG HOUSE BOOKS" Miranda Vaughn Archivist from MDAH, shared her work at the Convention and how to support Big House books. (Bruce Library and Bruce Fine Arts Club)
- Assist Libraries in their Summer Reading Programs (Bruce and many more)
- Spring StoryTime: (Lee County Library, Tupelo, MS. Designated club ladies dressed in costumes and read stories to children)
- Meet with Legislators and promote libraries: Hulen Bivins, *Executive Director from the Mississippi Library Commission*, spoke at the MFWC convention about Legislative support for Libraries.
- Supported STEM programs in libraries, schools, and the community. (As an additional part of the Summer Reading Program at Jesse Yancy Memorial Library, the club collaborated with research professor, David Holben, from the University of Mississippi School of Applied Sciences in the SEEDS Reads program. Based on food insecurity and food-based STEM education, SEEDS Reads was a four-week experiment running parallel to the SRP. Four members volunteered to assist with the distribution of SEEDS Reads packets. Volunteers delivered to individual homes and through a distribution site on the sidewalk of the Library four shelf-stable lunches and four food-based STEM experiments /activities with all necessary supplies, including four books to coordinate with the STEM activities and backpacks to 100 local kids ages ranging from K4-grade 8 once every week for four weeks for a total of 400 STEM activity packets and 400 lunches.)

One page is not enough to list even a tiny bit of what Theresa Buntyn and accomplished during her time as President of the Mississippi Federation of Women's Clubs. I hope that you will find her worthy of this Golden Book Award.

Sincerely,  
Janice Vaughn  
Branch Manager - Jesse Yancy Memorial Library  
314 N. Newberger Ave.  
Bruce, MS 38915 PH: (662) 983 2220

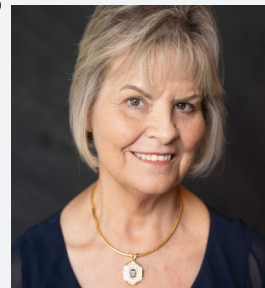
*Janice Vaughn*





## *GFWC-MFWC President-elect and State Membership Chairman Dr. Carolyn S. Tedford*

My oh my how time flies!! I am excited to announce that it is time to start organizing the 2024-2026 GFWC-MFWC Board. I will be traveling to Washington D.C. to attend the GFWC Orientation on January 4, 2024. I am looking forward to sharing with you the new volunteer opportunities that GFWC-MFWC can accomplish in each community throughout the state in April when the 2024-2026 Administration officially begins.



Dr. Carolyn S.  
Tedford

My goal is that through your support and leadership we will continue to increase membership, keep members informed, and inspire and empower members to serve. To accomplish this task, I need you to consider serving on the GFWC-MFWC Board for the 2024-2026 Administration. Please consider the areas that you might want to serve in. If you are currently serving or have served in the past, please be aware that there are positions that members can only serve in for two administrations. If you have any questions regarding this issue please check our bylaws, contact GFWC-MFWC Parliamentarian Suzanne Poynor, Dr. Tammie M. McCoy, or me. I will be emailing and posting application information and available positions on the website in the next couple of weeks.

I appreciate each of you that have already volunteered to serve in the upcoming Administration. The success of GFWC- MFWC in serving others is because of each of you. Every member counts!!

Thank you for the difference you make in the lives of others.

Wishing each and everyone of you a Very Merry Christmas and a Happy New Year.

In Federation Love,

*Carolyn*

Dr. Carolyn S. Tedford

*MERRY  
CHRISTMAS*



## *GFWE-MFWC Vice President Meri F. Newell*

Greetings from your friendly neighborhood MFWC Vice President! It is hard to believe that Fall is finally here. Here we are at the beginning of another year in which we can think of new ways to serve others and be a force for good in our communities.



**Meri F. Newell**

As we enter this new club year of service, this Dean of Chairs would like to encourage all Club Presidents to look over the MFWC Handbook, that also contains reporting information. In addition, the newest Reporting Guide will be up on the website soon. You will be able to look in detail at the Reporting Card for 2023 and know for sure what the criteria is for the judging of reports. If you have any questions, please contact me by email or text so that we can have a conversation.

As we moved through 2022, many of you found new and creative projects to make a real difference in your communities and beyond. . Keep channeling that energy to consider how you can make good connections, partnerships, and collaborations with your town's government, businesses, civic groups, and more to reach even more people and shine a light on what Woman's Clubs can do to make things happen.

The GFWC Top 10 Projects from each reporting area are available on the GFWC Member Portal. If you are in need of new inspiration, visit the portal and take a look at these projects. Many of them are things that we can do regardless of club size or money available. Our Poplarville Women's Club was recognized for their cemetery monument cleaning project last year!

The main thing to keep in mind with reporting is that it is an ongoing process through the year. If you are a chairman in your club, create your report, list your projects as you do them, and fill the numbers in as you receive them. If you are a club member, turn in your hours, donations, etc. in a timely manner. It can be as simple as keeping a calendar and writing down your club work, hours, money, etc. on the day you participate in club-sanctioned work. We are all busy (if you are a clubwoman, you are busy!); just find a way that you can keep up with information so that reporting time can be less stressful for all concerned. Finally, make sure that what you report is club-sanctioned work that is either a new project, an MFWC project, an ongoing project in your club, or one that has been approved by your club in the immediate past. Please do not report church-related volunteerism (tithes, teaching Sunday School, singing in the choir, for example) unless it is a volunteer project in which the club specifically is a participant (partnering with a church for a food bank, for example).

If you have any questions or ideas about the reporting process, please contact me at [Newellmf57@gmail.com](mailto:Newellmf57@gmail.com) or 601-307-6004. I will be more than glad to help you.

Have a great Fall!





### **Joyce Johnston, Southern Region President**

Joyce had a full hip replacement on Monday, October 30th. She did well through the surgery and was moved to a rehab facility. Thanks to the love and gifts from Southern Region Sisters, Tracy Johnston upgraded Joyce to a private room and got her some new and comfy clothes as she embarks on her therapy. Tracy says everyone has been really good to her and they've gotten her up sitting in a chair and doing physical therapy. On Friday, she walked 30 feet between parallel bars with two people kind of hanging on but she did the work. They are so appreciative of everyone's support. Depending on Joyce's therapy progress the goal is to head home in two weeks when they are sure there will be no clotting. You may send cards wishing her a full and speedy recovery to 10904 Victoria Arbor Way, Temple Terrace, FL 33617.

### **Sullen Brazil, GFWC First Vice-President**

Dear Members of the Board of Directors,

You may already know of the sad news of Billy Brazil, husband of GFWC President-elect Suellen. After over 5 years of battling many challenging health issues, Billy Brazil passed away on Saturday, November 11, 2023, at 9:55 p.m. (central time zone). He passed at home with Suellen, family, and friends at his side.

Please keep Suellen and her family in your thoughts and prayers. I have included her contact information below if you would like to send a card.

Suellen Brazil  
6510 Bay View Lane  
Daphne, AL 36526-4720  
[sbrazil@gfwc.org](mailto:sbrazil@gfwc.org)

Yours in Federation Friendship,  
Debra "Deb" A. Strahanoski  
GFWC International President





# BOOKS

## WORD SEARCH PUZZLE

AUDIO  
BLACK  
BLUE  
COFFEE TABLE  
COLORING  
COOK  
COUPON  
DATE  
GUIDE  
LIBRARY  
LOG  
NOTE  
PHONE  
PICTURE  
POCKET  
PRAYER  
RECORD  
REFERENCE  
RULE  
SCHOOL  
SCRAP  
SKETCH  
STAMP  
STORY  
TEXT  
WORK  
YEAR

E	C	N	E	R	E	F	E	R	D	A	H	S
G	F	O	H	C	T	E	K	S	U	T	H	C
L	C	A	O	D	D	N	M	D	E	X	A	H
I	C	Y	O	K	O	A	I	G	R	E	S	O
B	O	V	H	T	S	O	T	A	U	T	P	O
R	F	R	E	L	R	C	E	E	T	I	G	L
A	F	H	O	U	T	Y	R	L	C	N	D	T
R	E	G	L	B	G	R	P	A	I	Q	C	E
Y	E	E	A	H	L	R	E	R	P	O	K	K
S	T	O	R	Y	A	U	O	C	U	R	C	C
F	A	U	S	Y	M	L	E	P	O	A	N	O
A	B	B	E	O	O	L	O	W	L	R	B	P
C	L	R	L	C	M	N	P	B	H	Y	D	L
S	E	V	P	M	A	T	S	P	H	O	N	E

The words appear UP, DOWN, BACKWARDS, and DIAGONALLY.  
Find and circle each word.





PLEASE JOIN US IN  
CELEBRATING THE  
85TH ANNIVERSARY  
OF THE  
**GFWC-MFWC**  
*Fine Arts Club of Bruce*

SUNDAY, NOVEMBER 5, 2023

2:00 P.M.

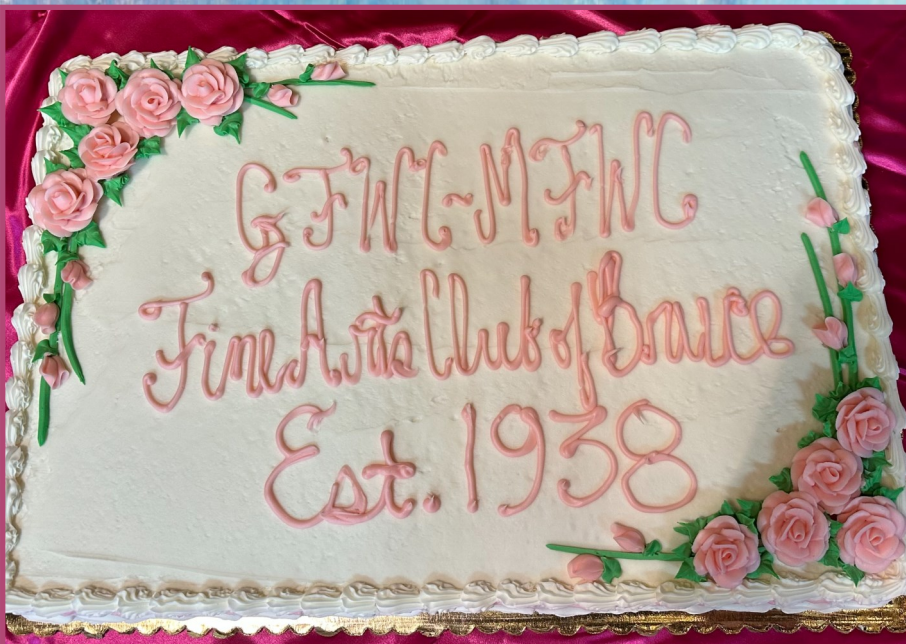
BRUCE FORESTRY MUSEUM  
BRUCE, MISSISSIPPI

Your presence is the greatest honor, however, if you wish to recognize the club with an honorarium, donations can be made to GFWC-MFWC Fine Arts Club of Bruce for the Dolly Parton Imagination Library for the Bruce School District.

**HERE'S TO  
ANOTHER  
85 YEARS  
OF COMMUNITY  
SERVICE**











# 2023 Christmas Events sponsored by GFWC-MFWC Clubs

Every year, GFWC-MFWC clubs host/sponsor Christmas Events in their community which brings the joy of Christmas to many individuals. These events help support the projects of local clubs through out the year. If you would like to participate in or donate to any of these events, please contact the sponsoring club.

- ♦ Christmas Pilgrimage Tour of Homes, presented by **Civic Woman's Club of Picayune**. When: 2 - 6 p.m., Saturday, December 2nd. Advance sale tickets \$10.00 available from club members and at Melinda' Fine Gifts. Proceeds fund scholarships to local students.
  - ♦ 2023 **Civic Woman's Club of Picayune** Christmas parade on Monday, December 4th at 6:00 p.m. . Entry forms available at [picayunecwc@yahoo.com](mailto:picayunecwc@yahoo.com).
  - ♦ **Cosmopolitan Club** presents the Annual Christmas Tasting Luncheon "Baking Spirit Bright." When: Saturday, December 2nd from 11:00 a.m. to 12:20 p.m. Where: Petal High School Cafeteria.
  - ♦ Christmas Online Auction is sponsored by the **Fine Arts Club of Bruce**. This auction will benefit the Dolly Parton Imagination Library for the Bruce area.
- When: November 27th - December 1st.
- ♦ **Homochitto Heritage Club** is hosting a Christmas Auction. Join them for a good meal and fun fellowship on Tuesday, November 28th at 6:00 p.m. at Meadville Baptist Church. Tickets are \$15.00. All proceeds are given back to those in need in our local community.
  - ♦ **Florentine Club and Florentine Evening Club** are hosting their 25th Anniversary Christmas Tour of Homes. When: Sunday, December 3rd from 2:00 p.m. to 5:00 p.m. Ticket at \$10.00 and can be purchased from a member, at City Hall or at tour homes.
  - ♦ The **Dixie Daisy Juniores** present a countywide Holly Jolly Christmas Party. Tickets are \$10.00 per child and free for 1 and under. They will

(Continued on page 12)



(Continued from page 11)

have Santa Pancakes, Stories with Santa, Pictures with Santa, Santa Letters, Crafts and Games. When: December 15th. Time: 5:30 p.m. to 8:00 p.m. Where: Bude Baptist Church.

- ♦ **Pontotoc Junioresettes Club** presents the 14th Annual Rudolph Run. When: Saturday, December 9th at 8:30 a.m. Register online at Race Signup.

- ♦ **Fine Arts Club of Bruce** Christmas Tour of Homes will be held on Sunday, December 3rd between 2:00 p.m. and 4:00 p.m. Tickets can be purchased from club members, Jeffery's, City Hall or at Hospitality Room.



## 2023 Civic Woman's Club Christmas Parade

Monday, December 4 at 6 p.m.

Entry forms: [picayunecwc@yahoo.com](mailto:picayunecwc@yahoo.com)

GFWC-MFWC Homochitto Heritage Club

## Christmas Auction

Please join us for a good meal and fun fellowship!  
Tuesday, November 28th, 2023  
6:00 PM  
Meadville Baptist Church  
Tickets \$15

\*All proceeds are given back to those in need in our local community



Cosmopolitan Club of Petal  
presents the  
Annual Christmas Tasting Luncheon  
*Baking Spirits Bright*  
Saturday, December 2, 2023  
11:00-12:20  
Petal High School Cafeteria



Tickets: \$10.00

25TH ANNIVERSARY  
**CHRISTMAS**  
FLORENCE  
TOUR OF HOMES

SUNDAY • DEC 3, 2023 • 2-5 PM

Vickie <b>CHAPMAN</b> 116 Whitetail Boulevard	Brandy & Rusty <b>YATES</b> 144 Valley Brook Trail	Eddie & Ashely <b>WILKINSON</b> 156 Valley Brook Trail
--	---	---

**VILLA SOUTH**  
217 College Street

**HERITAGE ROOM**  
North Church Street

LIGHT REFRESHMENTS AT  
**FLORENCE COMMUNITY CENTER**  
427 South Church Street

Must have ticket to enter homes.  
Purchase tickets from Member,  
City Hall, or at homes.

 **TICKET: \$10**

SPONSORED BY:  
GFWC-MFWC Florentine Club and Florentine Evening Club

THE GFWC-MFWC FINE ARTS  
CLUB OF BRUCE IS HOSTING A

# Christmas Online Auction

All proceeds go to the Dolly  
Parton Imagination Library for  
the Bruce School District.

November 27th - December 1st

The Dixie Daisy Juniors  
present a countywide  
**Holly Dolly**  
**CHRISTMAS Party**

Santa Pancakes  
Stories with Santa  
Pictures with Santa  
Santa Letters, Crafts & Games

**Bude Baptist Church**  
235 BUDE BAPTIST ROAD, BUDE, MS 39630  
DECEMBER 15, 2023  
5:30 PM - 8 PM

Contact Caroline Fairley 601-597-3385 or  
Kelsey Morgan 601-384-6924 with any questions

**\$10**  
per child  
free for 1  
and under







### Christmas Pilgrimage Tour of Homes

2-6 p.m. Saturday, December 2<sup>nd</sup>

Advance sale tickets \$10 available from  
club members and at Melinda's Fine Gifts

This year's hosts:

Historic City Hall, Goodyear Boulevard  
The Herrington home, 4019 Driftwood Drive  
The Verret/Bertucci home, 125 Peninsula Drive  
The Norwood home, 40 Clear Sky Drive  
Central Baptist Church, McNeill

\*Proceeds fund scholarships for local students\*







## A Christmas Carol Vocabulary

O	E	L	A	E	R	R	U	S	H	E	M	E	Y
N	O	I	T	A	L	O	S	I	N	O	I	T	L
Y	Y	T	R	N	A	E	I	G	T	I	N	H	I
F	R	E	E	D	O	M	I	I	M	T	S	I	M
I	M	U	P	E	I	R	E	M	R	R	P	C	A
I	E	B	R	Y	H	T	A	P	M	E	I	S	F
R	M	I	E	R	L	I	T	I	T	R	R	I	E
B	O	T	S	N	T	B	M	A	M	A	A	I	M
M	R	T	S	O	L	T	L	I	U	G	T	I	A
E	I	E	I	S	I	O	P	I	T	Y	I	E	L
M	E	R	O	C	N	A	G	F	I	Y	O	T	B
O	S	B	N	H	T	T	T	I	F	E	N	I	P
R	T	M	B	T	T	R	I	R	C	H	A	M	F
Y	I	C	H	O	I	C	E	S	I	E	L	E	E

EMPATHY  
 REPRESSION  
 LOGIC  
 ISOLATION  
 INSPIRATIONAL  
 ETHICS  
 BITTER  
 BLAME  
 MEMORY  
 FAMILY  
 MEMORIES  
 CHOICES  
 TIME  
 PITY  
 SURREAL  
 GUILT  
 FREEDOM

Play this puzzle online at : <https://thewordsearch.com/puzzle/12925/>



# Mississippi Public Broadcasting

Submitted By  
Sue Freeman,  
MFWC Special  
Emphasis MPB  
Chairman

“Your Stories.  
Our Mission”

“Great things are happening at  
Mississippi Public Broadcasting!”

In TV, Radio, News, Education, every part of our agency is creating dynamic programs, reaching new audiences, touching the lives of Mississippians of all ages and backgrounds. And we’re putting our best digital foot forward, too, delivering Mississippi’s unique stories in new formats and on new platforms.

That mission, of course, is Mississippi. Same as it has always been. We are inspired by the people of this great state and their stories, and we strive to continue to inspire you and your family. Taken from the MPB Fine Tuning October 2023 Issue.

As Mississippi Public Broadcasting (MPB) enters its sixth decade of service to Mississippi residents, it remains committed to its original mission of providing “educational and instructional professional growth and public service programs for the students and citizens of Mississippi.”

The GFWC-MFWC clubs of 1968-1970 played a vital role in lobbying the State Legislature to pass the initial legislative bill in 1969 with funding bill passed in 1970. Today as GFWC-MFWC Clubwomen, we can continue to support MPB as it continues to provide quality television, education videos, and

radio programming. **Your continuing supports make MPB possible.**

These are just a few of the many enjoyable specials and recurring programs that are shown by MPB: Mississippi Roads with host Walt Grayson; *Mississippi Outdoors*; *Masterpiece*; *Antiques Roadshow*; *the Mississippi Antique Showcase* (from Columbus and new episodes will be filmed in Biloxi); *NOVA*; *Nature*; *Austin City Limits*; *Fit to Eat*; *Secrets of the Dead*; *Frontline*; *MPB Classics*; *Great Performances*; and the various Ken Burns’ specials such as the new one, *The American Buffalo*. This month of October also featured a special on the *Rolling Fork Tornado of 2023*.

MPB is partnering with the University of Mississippi with a new video series, “**Mind in the Making: The Seven Essential Life Skills Every Child Needs**” which is based on the book by Ellen Galinsky. It focuses on the seven essential skills children must develop to build a strong foundation for lifelong success: Focus and Self-Control, Perspective Taking, Communicating, Making Connections, Critical Thinking, Taking on Challenges, and Self-Directed and Engaged Learning. The partnership includes a website that provides guidance and resources for parents and early childhood professionals, programs such as Parents are Teachers Too and Parent Academy. All these resources support community mobilization to ensure children are literacy proficient by the end of grade 3 (the Mississippi Campaign for Grade-Level Reading). MPB also has a 24/7 channel, **PBS Kids**, focused on broadcasting children’s programs.

Your club might consider having a speaker from either a MPB department or the MPB Foundation come and speak to your club. My club in Crystal Springs has Felicia Davis scheduled for our April 2024 meeting which is our club’s annual GFWC-MFWC Federation Month Observance, and the club emphasizes a program that has long been supported by the GFWC-MFWC clubs. Every month prior to the April program the club will take up extra monetary donations to present to Felicia Davis to help MPB with its educational programming needs. Perhaps your club might consider having a similar program in the future.

**Please remember to include a generous contribution from your club to MPB on your MFWC dues form.**

Programs and projects are reported on a separate MFWC reporting form that records individual contributions to MPB, MPB club membership, local MPB membership drives, publicizing MPB programs in local media, legislative contact, and other support. This can be cross-reported in the Education and Libraries CSP.

For more information on MPB, visit the website, [www.mpbonline.org](http://www.mpbonline.org). If you have any questions or need assistance, please contact me via email at: [Suefreeman5254@gmail.com](mailto:Suefreeman5254@gmail.com) or by calling or text at 601-946-9297.



# Hugh O'Brian Youth Leadership Seminar



Hi all!  
Mississippi's  
HOBY (Hugh  
O'Brian Youth)  
Leadership  
Seminar has a  
new home at the

campus of Mississippi College in Clinton, Mississippi! It is still centrally located and in a safe environment. Mississippi HOBY is always held the weekend following Memorial Day, so in 2024 it will be May 31 – June 2.

As most of you know, HOBY a leadership training program for upcoming high school juniors both male and female. It's mission is promoting volunteerism and encouraging students to think for themselves. Registration starts in September, so now is the time to contact your high school counselors and remind them to start the process of selecting your school's representative. Each school has it's own selection method, so get with your school's counselor to see what they prefer. Also, if your school hasn't been sending a student, please encourage your counselor to send one this year. MFWC was instrumental in getting HOBY started in Mississippi over 30 years ago, so let's get behind this tradition!

To sponsor your school's HOBY student, there is a line item on your MFWC Dues Form and it's \$200 which covers their room and board while at the seminar. There is also a registration fee which is the equivalent of when you pay college tuition, but that is traditionally paid by the school or the student. Your club can choose to pay this fee as well, but the line item on our Dues Form is for the sponsorship fee only and stays in Mississippi. Please communicate this to the counselor so they do not think your club is paying the registration fee which must be paid online at HOBY.org.

Also, on our MFWC Dues Form please be sure to fill in which school your club is sponsoring.

Traditionally, we have also helped supply HOBY

snacks for the seminar by bringing \$25 Walmart/ Sam's gift cards to our district conventions. This is great, but you can also add this to your dues form along with the \$200 sponsorship. If you prefer to bring a gift card to district convention, that is fine, too!

If you have any questions, please feel free to contact me.

Thank you in advance for sponsoring a HOBY student this year!

Belinda Peacher

2022- 2024 HOBY Chair

601-291-6937

bbpeacher@gmail.com

## 2024 Mississippi HOBY Leadership Seminar May 31 - June 2, 2024 Mississippi College Clinton, MS



**If you are interested in volunteering at  
our seminar,  
[please click here for application  
information](#)**

## Education and Libraries CSP

Greetings MFWC members!

Hope everyone enjoyed summertime. I definitely did!! Fall is fast approaching. Hoping for cooler weather soon.

Each season has memories of reading books in different environments.... Summer...reading a fun book on the beach...Fall...reading on the patio in the afternoon or evenings before it is too chilly... Winter...curled up in front of fire reading a good book...Spring...sneaking out on patio again when it is just barely warm enough to sit outside. Fun times and good memories always.

You ladies rock! You are there for your local school systems. Supporting new teachers in supplying their classrooms with much needed items, recognizing educators and administrators to let them know they are appreciated, helping with an assortment of programs to make learning fun for the students and relieve some of the burdens of the teachers, and the donations made to other areas of the education system that are not as obvious but fill needs to make a better school system.

Another platform to use to recognize our state library system is social media. Please make it a point

to support the Mississippi Library Commission by liking on Facebook, following on Instagram, and following on X.

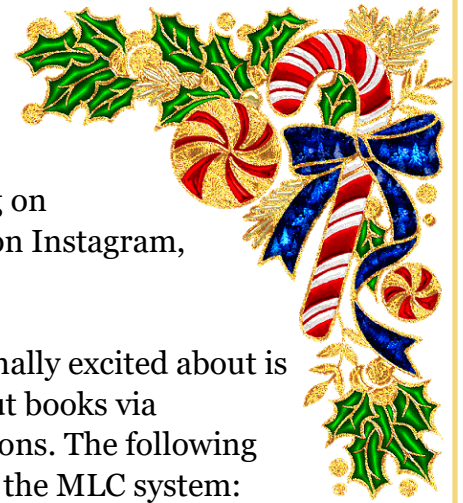
Something I'm personally excited about is the ability to check out books via smartphone applications. The following are available through the MLC system: Overdrive, Libby and the one I use is Hoopla. It makes it very easy to download a book and enjoy reading when having some unexpected downtime.

Again, thank you for all you do in your communities. GFWC-MFWC is truly living the volunteer spirit in the wonderful things done for the betterment of our communities.

If you have any questions about the Education and Libraries Community Service Program, please contact me [lm.barefield@gmail.com](mailto:lm.barefield@gmail.com).

Merry Christmas and a Happy New Year to all.

Lisa McGee



# Welcome Back

Let's give a warm MFWC welcome back to The Woman's Club of Tunica County, MS (aka Tunica Woman's Club) and the Aberdeen Woman's Club



# Children's Books

U	O	A	P	C	A	D	A	G	O	A	N	L	N
G	D	N	E	I	M	T	E	O	T	G	D	O	T
O	O	I	T	N	L	L	I	L	D	M	I	B	G
O	H	L	E	D	E	L	N	D	P	G	E	E	I
D	A	E	R	E	Z	I	E	E	E	A	R	R	L
N	E	B	P	R	N	H	H	N	M	N	L	E	T
I	Y	M	A	E	U	N	I	B	T	O	O	N	A
G	H	U	N	L	P	I	L	A	B	E	I	S	I
H	I	H	G	L	A	F	T	L	D	E	H	T	L
T	O	T	E	A	R	L	I	L	L	L	U	A	N
M	L	I	T	T	L	E	M	E	R	M	A	I	D
O	H	E	T	I	H	W	W	O	N	S	T	N	R
O	G	N	I	L	K	C	U	D	Y	L	G	U	I
N	T	I	B	B	A	R	R	E	T	E	P	E	T

THUMBELINA  
 CINDERELLA  
 NEMO  
 UGLY DUCKLING  
 GOODNIGHT MOON  
 LITTLE MERMAID  
 RAPUNZEL  
 ELFIN HILL  
 PETER RABBIT  
 GOLDEN BALL  
 BERENSTAIN  
 SNOW WHITE  
 PETER PAN

Play this puzzle online at : <https://thewordsearch.com/puzzle/1659/>



# MARK YOUR CALENDARS FOR THE INAUGURAL



# National Day of Service

SATURDAY, SEPTEMBER 30, 2023

*Living the Volunteer Spirit*

[www.GFWC.org](http://www.GFWC.org)

#GFWC23NDS

Help Us to End Hunger in the United States By  
Volunteering, Donating, or Organizing a Community Service Project



*Copied from 2023 GFWC Fall Clubwoman Magazine.*

## INAUGURAL GFWC NATIONAL DAY OF SERVICE A SUCCESS

A year ago, the General Federation of Women's Clubs (GFWC) National Day of Service, September 30, was an idea. Ten months later, it came to pass with participation across the country nothing short of spectacular. In fact, preliminary results recorded from the "NDS Impact Reports" submitted by clubs indicate that an estimated 194,333 pounds of nonperishable food items were collected and distributed to local food banks, pantries, churches, schools, daycare centers, colleges, and many more organizations to feed families and individuals suffering from food insecurity and hunger. GFWC received approximately 1,000 pledges, with participation estimated at more than 25,000 GFWC members and community leaders across the 50 states volunteering to raise public awareness about food insecurity and collecting and distributing food to those in need.

### National Day of Service (NDS) in Mississippi

List below are the submitted reports to GFWC describing the volunteer effects of Mississippi clubs to help combat hunger in the United States.

- Twentieth Century Club of Bruce collected nonperishable food items to restock their local food pantry at the Calhoun County Baptist Association. They issued an invitation to the public on Facebook to join them in this project. It was shared by several members for many days.

*(Continued on page 21)*



(Continued from page 20 - National Day of Service)

■ Poplarville Woman's Club collected food for their local pantry at meetings and the county fair. They helped the food pantry to prepare and serve over 400 meals for their annual fish fry fundraiser. They also collected food for their Community College food market.

■ Florentine Club placed boxes for donations at Ramey's Grocery Store

in Florence, MS. Members brought canned goods to their September meeting. ON National Day of Service day, they collected 577 cans and \$410. They delivered this to three local food pantries and the money was given to MMC for their "Love in a Bag Ministry"

- Fine Arts Club of Bruce collaborate with two local grocery stores, members were guest carry-out clerks collecting tips for donations to Our Daily Food Pantry. A collection table at the grocery store served as a drop off station for additional donations and non perishables for MS VA Freedom Pantry. Members wore #IamGFWC shirts and NDS buttons to bring awareness to GFWC and food insecurity.
- Purvis Woman's Club asked each member to bring non-perishable food items to their club meeting. The food was gifted to Bass Church Food Pantry.
- Cosmopolitan Club had members to work at a local food pantry by unloading pallets of canned goods and stocking shelves. They also prepared 50 "Blessing Bags" to be distributed to the homeless. These bags contained toiletry items along with non-perishable food items. Some members worked at the First Bridge program that provides backpacks of food to sustain a student over the weekend or during intersession.
- Decatur Woman's Progressive Club collected food for Decatur Methodist Church food Pantry. Participant of St. Jude Virtual Walk donated food in coordination with this event. The Mayor signed a Proclamation for the National Day of Service.





# National Day of Service Pictures



Donations collected at club meetings by the Purvis Woman's Club.



Cosmopolitan Club members collected items.

*Now it's my Dream to see that no child in this world ever goes hungry, certainly not here in America, the most bountiful country in the world.*

*We can do better ... we must!" ~*

*— Dolly Parton*



Decatur Progressive Woman's Club donated food to local food pantry.



Decatur PWC donated food to coordination with St. Jude Virtual



Cosmopolitan Club collects food items for



# Dr. Seuss

A	U	Y	S	T	R	H	U	S	G	E	G	G	S
M	C	A	U	R	N	C	T	G	R	U	E	O	H
H	O	R	T	O	N	N	A	Y	L	O	O	L	Y
D	E	E	N	H	T	I	T	R	O	E	T	E	G
H	A	R	O	H	E	R	R	R	R	G	E	L	O
S	S	H	H	S	N	G	U	E	A	E	H	Y	K
N	A	E	T	T	C	E	F	B	X	E	Y	O	T
N	M	M	H	L	H	H	F	L	O	A	O	T	H
A	H	O	R	C	S	T	U	U	S	S	O	A	G
G	T	N	H	W	T	E	L	M	A	N	M	G	G
G	W	H	L	A	H	E	A	L	L	W	Y	O	G
E	A	C	A	T	T	O	E	W	L	R	M	A	R
R	G	Y	F	R	L	O	U	N	Y	S	R	F	A
W	A	C	K	Y	C	N	H	T	S	S	T	W	G

WHO  
HAM  
SAM  
CAT  
LORAX  
MULBERRY  
TRUFFULA  
WACKY  
SMOG  
THNEED  
SNEETCHES  
THE GRINCH  
HAT  
EGGS  
HORTON  
SALLY

Play this puzzle online at : <https://thewordsearch.com/puzzle/1573/>



# Merry Grinchmas!



*Please join us October 26-29 on  
our beautiful Gulf Coast for the  
Magic of Mississippi.*

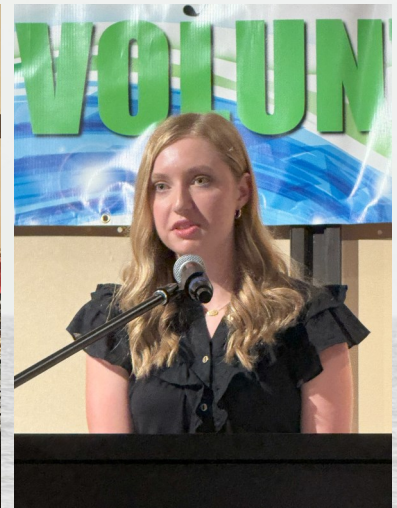
**The Magic of Mississippi  
Imperial Palace Casino Resort and Spa  
Biloxi, Mississippi**

**Experience the Magic of the Historic Biloxi  
Lighthouse followed by a Luncheon/Tea  
hosted by the Gulfport Women's Club or  
enjoy the Magic of Relaxation with a Spa  
Day at the IP Senses Spa.**



**T**hank You Dr. Carolina S. Tedford and Judy Thomas Martin for a job well done. Your great leadership and organization skills made sure that GFWC Mississippi hosted one of the best Southern Region Conference. We will be sure to ask you to chair again in five years.

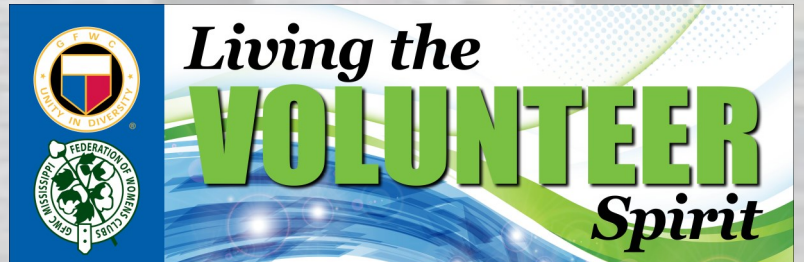
*On the following pages you will see through the view of pictures what a wonderful time the our Southern Sister had at the Magic of Mississippi Southern Region Conference.*



#### Advice from the Ocean

- ♦ Be Shore of Yourself
- ♦ Come Out of Your Shell
- ♦ Take Time To Coast
- ♦ Avoid Pier Pressure
- ♦ SEAL LIFE'S BEAUTY
- ♦ Don't Get Tide Down
- ♦ Make Waves!







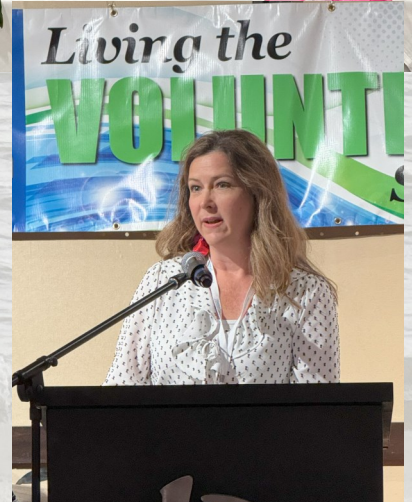
## *A Very Special Thank You.*

I want to thank all of our Mississippi Ladies and Clubs who made our GFWC Southern Region Conference a success. We had so many to participate either by hosting, decorating, pages, chairman of conference, committee members, various fundraising activities, registration, collating bags, nurses, leading tours, Woman's Club of Gulfport for hosting our luncheon, and so many other varieties of service that I cannot name all the activities that Mississippi stepped up to this event. Your flexibility and willingness to go above and beyond to make sure everything was taken care of was greatly appreciated. The event would not have been such a success without you and your help.

In Federation Love,  
Theresa Buntyn  
GFWC-MFWC President









## 2023 GFWC Southern Region Convention

The 2023 GFWC Southern Region Convention was a success due to all the hard work and commitment of the ladies throughout Mississippi. Mississippi made history regarding the most registrations for a Southern Region Conference. There were 179 registered for the conference and 59 were from Mississippi.

I appreciate all the ladies that worked so hard to demonstrate the Magic of Mississippi. I have had numerous cards, calls and messages from the other four states telling me that your generous heart and hospitality were very evident through your actions. They also commented that it was wonderful to see how so many of the ladies of Mississippi were involved in the different aspects of the convention. Each of you truly made Mississippi shine bright.

I can't thank each of you enough for attending and performing multiple tasks to make this convention a very special event. When you see the lists below, they will seem long, that is because we have so many that participated. If I miss listing anyone that participated in the Southern Region Convention, please let me know.

Dr. Carolyn S. Tedford

SRC Chairman

## GFWC Mississippi clubwomen for being a Patron of the 2023 GFWC Southern Region Conference

- |                                     |                          |
|-------------------------------------|--------------------------|
| ♦ Ackerman Civic League             | ♦ Dr. Tammie M. McCoy    |
| ♦ Frances H. Brown                  | ♦ Pontotoc Woman's Club  |
| ♦ Theresa Buntyn                    | ♦ Suzanne Byrd Poynor    |
| ♦ Cosmopolitan Club                 | ♦ Diane Rouse            |
| ♦ GFWC-MFWC Fine Arts Club of Bruce | ♦ Michelle Sutton        |
| ♦ Lisa A. Harris                    | ♦ Dr. Carolyn S. Tedford |
| ♦ Lisa Lucius                       | ♦ Janette Thrash         |
| ♦ Judy Thomas Martin                | ♦ Becky C. Wright        |

## GFWC-MFWC Clubs that Donated Door Prize Money

- |                               |                                   |
|-------------------------------|-----------------------------------|
| ■ *Batesville Woman's Club    | ■ *Florentine Evening Club        |
| ■ Women's Club of Booneville  | ■ *Homochitto Heritage Club, Inc. |
| ■ Crystal Springs Floral Club | ■ *Eupora New Century Club        |
| ■ Ellisville Fidelia Club     | ■ *Star Woman's Club              |
| ■ *Florentine Club            |                                   |

\* Official Club name includes GFWC-MFWC



**GFWC -MFWC wishes to thank each of the following business for their donation to the 2023 SRC. Their donations are greatly appreciated**

- Piggly Wiggly of Bruce (Bruce, MS)
- McCoy's Grocery (Ecru, MS)
- Pearl River County Hospital and Nursing Home (Poplarville, MS)
- Bank Plus (Poplarville, MS Branch)
- Hancock Whitney Bank (Poplarville, MS Branch)
- Humana (Biloxi, MS)
- Robert's Wealth Management (Biloxi, MS)
- MS Department of Transportation (Jackson, MS)
- Ocean Springs Coca-Cola Bottling Company (Ocean Springs, MS)
- Pearl River Tea (Poplarville, MS)
- Grumpy's Grove Honey (Poplarville, MS)
- Mississippi Magazine

**GFWC-MFWC members that served as committee chairman, hostess for officers, pages, assisting with registration, working at the GFWC-MFWC booth, packing registration and tour bags, errands, decorations, and donations, etc. Most of the ladies on this list performed multiple duties and task at SRC.**

- |                        |                           |                     |
|------------------------|---------------------------|---------------------|
| • Darlene Adams        | • Annajeral Knight        | • Bridget Smith     |
| • Susan Alexander      | • Leahne Lightsey         | • Magan Smith       |
| • Penny J. Barr        | • Lillie Lofton           | • Janis Sita        |
| • Theresa T. Berryhill | • Abby May                | • Lori Stockstill   |
| • Debbie Blackwell     | • Judy Thomas Martin      | • Michelle Sutton   |
| • Deena Branum         | • Dr. Tammie M. McCoy     | • Cindy Thompson    |
| • Jodie Brickson       | • Lisa McGee              | • Jeanette Thrash   |
| • Frances H. Brown     | • Ada McGrevey            | • Deborah Warren    |
| • Theresa Buntyn       | • Gail Mitchell           | • Tina Waters       |
| • Charlene Cannon      | • Cherry Moon             | • Becky W. Watkins  |
| • Jackie Cariker       | • Meri F. Newell          | • Shirley Wiltshire |
| • Shannon Collins      | • Jana J. Owens           | • Dawn Vosbein      |
| • Kara Dulaney         | • Sandra Pelas            | • Belinda Vowell    |
| • Doreen Early         | • Jeannie Pittman         |                     |
| • Libby D. Everett     | • Suzanne Byrd Poynor     |                     |
| • Tinker Forrester     | • Mikayla Shelton Prisock |                     |
| • Betty Harpe          | • Sherri E. Reid          |                     |
| • Lisa A. Harris       | • Amy Raspberry           |                     |
| • Anita Harris         | • Diane Roberts           |                     |
| • Linda Hawkins        | • Pollyanna H. Robelen    |                     |
| • Carolyn C. Huey      | • Diane Rouse             |                     |
| • Amy Jacobs           | • Rose Mary Shelton       |                     |
| • Renee Keith          | • Susan Shurden           |                     |



## GFWC-MFWC Southern Region 2023 Conference Chairmen

Southern Region Conference Chairman	Dr. Carolyn S. Tedford
Southern Region Conference Co-Chairman	Judy Thomas Martin
Registration and Credentials Chairman	Diane Rouse
Pages Chairman	Renee Keith
GFWC Mississippi Fundraising Chairman	Ada McGrevey
Technology Chairman	Lisa A. Harris
Transportation Chairman	Shirley Wiltshire
T-Shirt MS Fundraising Chairman	Frances H. Brown
Nurses for Convention	Deena Branum and Janis Sita
Hostesses for Tours	Deena Branum, Frances H. Brown, Diane Rouse and Shirley Wiltshire
Hostess for Spa	Judy Thomas Martin and Lisa Magee
Hosting the Tour Lunch of Friday	Women's Club of Gulfport
Hostess for SR President Joyce Johnston	Darlene C. Adams
Hostess for GFWC International President Deb Strahanoski	Sherri E. Reid
Hostess for GFWC Second Vice President Jolie Frankfurth	Abby May and Amy Jacobs
Hostess for GFWC Treasurer Becky C. Wright	Abby May and Amy Jacobs
Hostess for GFWC Director-elect of Juniors Clubs Shannon Bailey	Abby May and Amy Jacobs
Hostess for Laurie Parker and Mary Lou Sanelli	Rose Mary Shelton

## GFWC-MFWC Clubs who decorated and hosted meals

### Thursday Board Dinner

Pontotoc Woman's Club, \*Lanier Club and  
Ackerman Civic League

### Saturday Lunch

\*Fine Arts Club of Bruce, \*Twentieth Century Club  
of Bruce, and GFWC Magnolia Junior Woman's Club

### Friday Lunch

Woman's Club of Gulfport

### Saturday Dinner

Cosmopolitan Club, \*Civic Woman's Club of  
Picayune, and Fine Arts Club of Waynesboro

### Friday State Night

\*Florentine Club, \*Florentine Evening Club and Star  
Woman's Club

### Sunday Breakfast

Poplarville Woman's Club, \*Purvis Woman's Club  
and \*Raleigh Woman's Club

### MFWC President Invitation Breakfast

\*Decatur Progressive Club and Quitman Woman's  
Club



# Famous Writers

H	N	D	L	F	A	T	R	I	E	A	G	M	A
U	G	L	G	R	N	L	L	M	I	I	N	N	L
N	T	S	E	A	O	D	D	T	T	E	I	M	E
O	S	R	O	N	E	A	T	D	S	D	L	J	X
T	H	J	R	C	D	N	M	R	I	A	P	U	A
Y	A	A	G	E	I	N	A	A	R	N	I	L	N
L	K	N	E	S	T	A	R	E	H	I	K	E	D
B	E	E	E	B	N	S	K	E	C	E	D	S	E
D	S	A	L	U	E	E	T	R	A	L	R	V	R
I	P	U	I	R	S	W	W	H	H	D	A	E	D
N	E	S	O	N	B	E	A	I	T	E	Y	R	U
E	A	T	T	E	I	L	I	N	A	F	D	N	M
O	R	I	Y	T	T	L	N	E	G	O	U	E	A
E	N	N	N	T	N	D	E	B	A	E	R	A	S

SHAKESPEAR  
 MARK TWAIN  
 GEORGE ELIOT  
 ALEXANDER DUMAS  
 JULES VERNE  
 AGATHA CHRISTIE  
 JANE AUSTIN  
 ANNA SEWELL  
 ENID BLYTON  
 RUDYARD KIPLING  
 FRANCES BURNETT  
 EDIT NESBIT  
 DANIEL DEFOE

Play this puzzle online at : <https://thewordsearch.com/puzzle/38507/>





## *Club Resources*

### **2022-2024 Directory**

Contact Lisa A. Harris at [lisaharris@outlook.com](mailto:lisaharris@outlook.com) for an electronic copy of our directory. For verification purposes you will need to provide your name and your club name in the requesting email. We are doing this to protect against identity theft of your contact information and photograph. Please do not share the information in this directory with anyone outside our organization.

### **2022-2024 Logos**

GFWC Logos - GFWC Emblem, Logo Files and 2022-2024 Administration Logo have been moved to the GFWC Member Portal. After logging in to the Portal, click on "My Digital Library" under the profile icon in the upper right corner and select the GFWC Resources folder.

MF WC Logos and MF WC President's Logos - for a high quality image file, contact Lisa A. Harris at [lisaharris@outlook.com](mailto:lisaharris@outlook.com).

### **2022-2024 Governance**

Revision of the 2022-2024 Governance has not been completed. The Governance are being updated to reflex the changes voted upon at the 2023 State Convention in Tupelo, MS. When the revisions have been made and posted to our website, I will let you know.

### **Reporting Year 2024, Club Year 2023 Report Forms**

Reporting Forms will be updated and added to our website at [https://www.gfwc-mfwc.org/GFWC\\_MF WC\\_Forms.html](https://www.gfwc-mfwc.org/GFWC_MF WC_Forms.html) by the end of December. Be sure that you fill out the President's Special Project Form this year as we did not do this form last year.





# Announcements and Upcoming Events

## Important Dates (Overview)

<b>January 2024</b>	
1	GFWC-MFWC <b>State &amp; District Club Dues</b> must be postmarked by this date each year for club reports to be judged and to be eligible for awards. Please note: District Dues must be sent to your District Treasurer.
<b>February 2024</b>	
12	GFWC-MFWC <b>Finance Committee &amp; Executive Committee Meeting</b> by Zoom Video Conferencing
17	GFWC-MFWC <b>Winter Executive Board Meeting</b> by Zoom Video Conferencing
<b>March 2024</b>	
2	GFWC-MFWC <b>Central District Convention</b> , Raleigh, MS
9	GFWC-MFWC <b>Southern District Convention</b>
23	GFWC-MFWC <b>Northern District Convention</b> , Eupora MS
<b>April 2024</b>	
25-27	MFWC Annual State Convention, Eagle Ridge Conference Center, Raymond, MS
For a complete listing of Important Dates, <a href="#">click here</a> .	

### Postmark Deadline:

Please note: if the postmark deadline for an application /form/report /entry falls on a Sunday or Holiday, the application/form/report/entries **MUST** be postmarked by the prior Saturday.



# DEADLINES

## *approaching*

### WHEN WHAT

#### JANUARY 2024

- 1st GFWC-MFWC **State Club Dues** must be postmarked by this date each year for club reports to be judged and to be eligible for awards
- 1st GFWC-MFWC **District Club Dues**. Please note: District Dues must be sent to your District Treasurer

#### FEBRUARY 2024

- 1st GFWC-MFWC **Club Reports** must be postmarked by this date each year for reports to be judged
- 1st GFWC-MFWC **Challenge Grant applications, Hebron Memorial Scholarship applications and GFWC Writing Contest entries** must be postmarked by this date each year to be eligible for consideration
- 10th **GFWC-MFWC Lead applications, Clubwoman of the Year Award applications and Juniette of the Year (JOY) Award applications** must be postmarked by this date each year to be eligible for consideration
- 15th GFWC-MFWC **Scrapbooks and Yearbooks** must be postmarked by this date each year to be eligible for consideration
- 22th GFWC **Community Impact Program** Award material must be postmarked by this date to be eligible for consideration

#### MARCH 2024

- 1st GFWC-MFWC **Club History Report** Form must be postmarked by this date each year
- 1st GFWC-MFWC **Sarah Peugh Butterfly Scholarship applications** must be postmarked by this date each year to be eligible for consideration
- 15th **GFWC-MFWC Club Newsletters and Club Websites entries** must be postmarked by this date each year to be eligible for consideration







# GFWC-Mississippi Federation of Women's Clubs, Inc.



## 2022-2024 Dues Form

### Club Information:

Club Name: \_\_\_\_\_ District: \_\_\_\_\_  
 Club President: \_\_\_\_\_ Phone Number: \_\_\_\_\_  
 Address: \_\_\_\_\_ Email: \_\_\_\_\_  
 Club Treasurer: \_\_\_\_\_ Phone Number: \_\_\_\_\_  
 Address: \_\_\_\_\_ Email: \_\_\_\_\_

**Club Dues:** \$30 x number of general members \_\_\_\_\_ listed on roster \$ \_\_\_\_\_  
 \$25 x number of juniorettes \_\_\_\_\_ listed on roster \$ \_\_\_\_\_  
**(No District dues, please. District dues should be sent to the District Treasurer)**

### Contributions:

- GFWC-MFWC President's Special Project: "Getting Back To Our Roots" ..... \$ \_\_\_\_\_
- Hebron Memorial Scholarship Fund (\$1,000 annual scholarship) ..... \$ \_\_\_\_\_
- Sarah Peugh Butterfly Scholarship Fund (\$1,000 annual Juniette Scholarship) ..... \$ \_\_\_\_\_
- Challenge Grant (for a Special Education Teacher) ..... \$ \_\_\_\_\_
- State Institutions: MS School for the Blind \$ \_\_\_\_\_ MS School for the Deaf \$ \_\_\_\_\_ .. \$ \_\_\_\_\_
- Name of State Institute sponsored by club:** \_\_\_\_\_ \$ \_\_\_\_\_
- Mississippi Public Broadcasting ..... \$ \_\_\_\_\_
- Youth Art: **\$10 per club suggested minimum** ..... \$ \_\_\_\_\_
- HOBY: \$200.00 per sponsored student or other donation (**\$20 minimum suggested**) ..... \$ \_\_\_\_\_
- Name of school sponsored by club:** \_\_\_\_\_
- Malone-Sisk (MS LEADS) Program ..... \$ \_\_\_\_\_
- "Dollars for Delegates" for officers' expenses to attend GFWC meetings ..... \$ \_\_\_\_\_
- Donation to Success for Survivors Scholarship which is a part of the GFWC Signature Program:  
   Domestic and Sexual Violence Awareness and Prevention. .... \$ \_\_\_\_\_
- Other Contributions not listed: \_\_\_\_\_ \$ \_\_\_\_\_
- \_\_\_\_\_ \$ \_\_\_\_\_
- \_\_\_\_\_ \$ \_\_\_\_\_

(Additional pages may be attached, if necessary)

**Total Of All Above:** \$ \_\_\_\_\_

### Instructions:

- Please mail this form along with your club's check made payable to MFWC and one copy of club roster with names, mailing addresses, email addresses & phone numbers postmarked by **November 1** to receive Honor Club Status to:  
     Becky W. Watkins, GFWC-MFWC Treasurer, Quitman, MS 39355, C/T: (601) 938-5247,  
     E: beckywatkins@bellsouth.net
- ALL checks MUST be made payable to MFWC. Please do not staple check to the form.
- Dues must be postmarked by **January 1** in order for a club to be eligible to have reports judged or to receive awards.
- For members added during the club year, please send name, address, email address & dues to Becky W. Watkins, GFWC-MFWC Treasurer.
- Send **deletions only** to Lisa A. Harris, *Mississippi Clubwoman* Circulation Editor at lisaharris@outlook.com or 822 SCR 115 South, Raleigh, MS 39153





# Merry Christmas

May the message of  
Christmas fill your life with  
joy and peace.

Best wishes to you and  
your family during this  
holiday season.

Greetings from the GFWC-  
Mississippi Federation of  
Women's Clubs, Inc.

## Notes:

- Club Name Change. GFWC Ackerman Twentieth Century Club has changed their official club name to Ackerman Civic League.
- If you wish to receive by email a copy of our financial report, please email GFWC-MFWC Treasurer Becky W. Watkins at [beckywatkins@bellsouth.net](mailto:beckywatkins@bellsouth.net). For verification purposes you will need to provide your name and your club name in the requesting email.
- District Dues should be sent to your District Treasurer by January 1st. Do not include your District Dues with your State Dues.

Northern District Treasurer  
Pamela R. Maxwell  
31 Caroline Cove  
Cleveland, MS 38732  
[prmaxwell@yahoo.com](mailto:prmaxwell@yahoo.com)

Central District Treasurer  
Lisa A. Harris  
822 SCR 115 S  
Raleigh, MS 39153  
[lisaharris@outlook.com](mailto:lisaharris@outlook.com)

Southern District Treasurer  
Jana Owen  
1 Pine Hill Circle  
Gulfport, MS 39057  
[jarrellj@bellsouth.net](mailto:jarrellj@bellsouth.net)





# General Federation of Women's Club



1734 N Street, NW  
Washington, DC 20036-2990

Phone:  
202-347-3168

For membership information:  
800-443-GFWC  
[www.gfwc.org](http://www.gfwc.org)





**JUNE 28**

LEADS

Board of Directors Meeting

Host State Night

**June 29**

Opening Ceremony

**June 30**

Gala Night

**July 1**

Installation

**HILTON CHICAGO**

**\$229 + TAXES & FEES**





**GFWC**  
est. 1890  
**GENERAL FEDERATION  
OF WOMEN'S CLUBS**

*Tis the season to  
Sparkle & Shine*

## **HOLIDAY OPEN HOUSE**

**Wednesday, December 6, 2023**

**11:00 AM–1:00 PM & 1:30 PM–3:30 PM**

**GFWC Headquarters**

**1734 N ST NW, Washington, DC 20036**

**RSVP to [Events@GFWC.org](mailto:Events@GFWC.org) by November 20**



# THE HILLS ARE ALIVE

## GFWC Southern Region Conference



*Cooking up a Good Time in Greenville*

Save the date

October 3-6, 2024

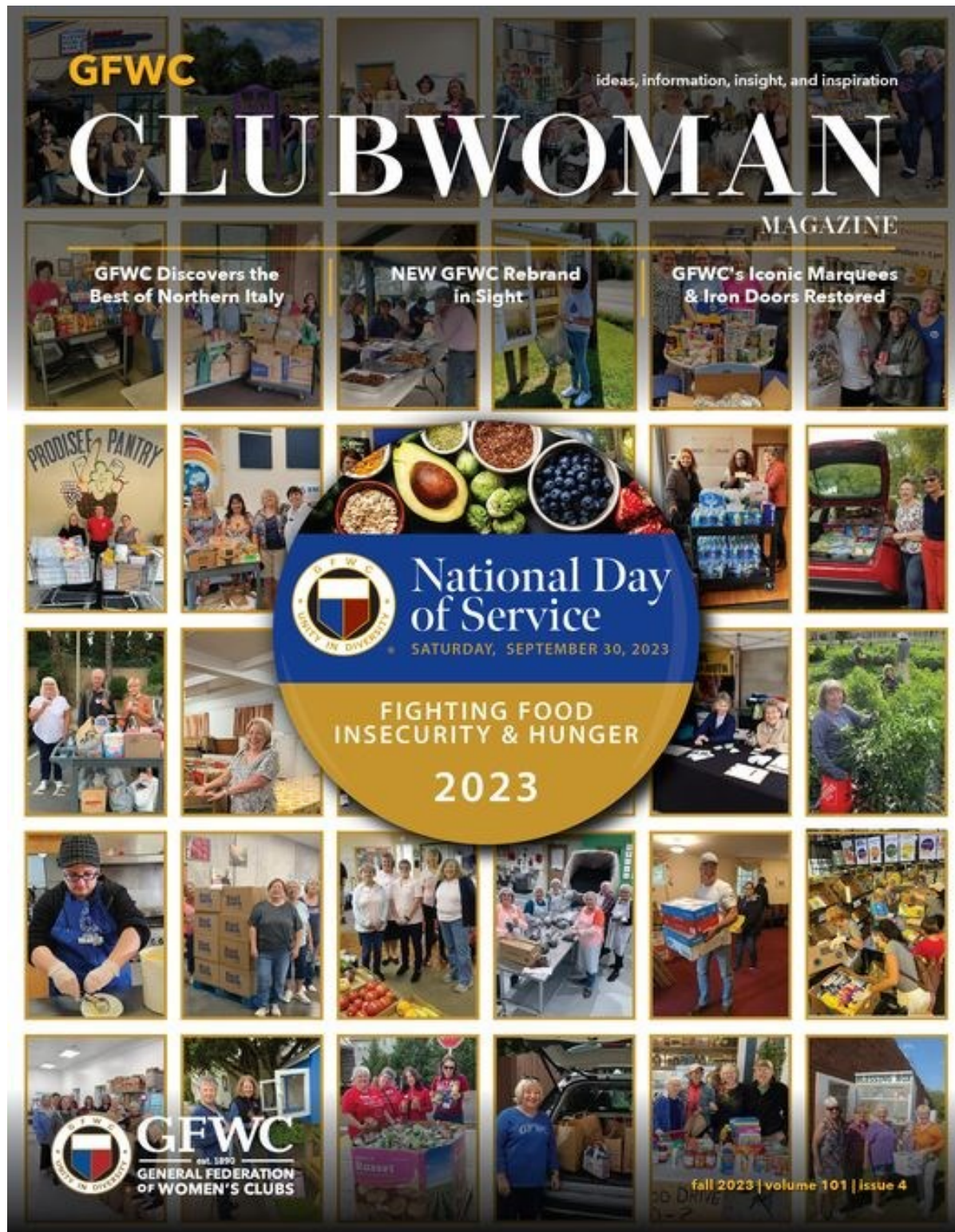
## Looking Forward to 2024

- \* **GFWC Women's History Celebration - March 6th**
- \* **GFWC Federation Day - April 24th**
- \* **2024 GFWC Annual Convention - June 29th to July 1st**
- \* **Installation of 2024-2026 GFWC Officers and Adjournment of Annual Convention - July 1st**
- \* **GFWC Southern Region Conference - October 3rd - 6th**





Available Now at GFWC Members Portal, look under Resources, C, Clubwoman Magazine.



GFWC *Clubwoman Magazine* is the premier publication of the General Federation of Women's Clubs, and one of the most useful and beneficial communication tools we have to inform and educate our Federation about community service opportunities, project ideas, and ways to enhance club operations. Published quarterly, the magazine is a source for insightful and informative content that keeps our members in tune with all things GFWC. The magazine is released early March, June, September, and December, and all electronic issues are archived in the GFWC Member Portal, Resources, C, Clubwoman Magazine.