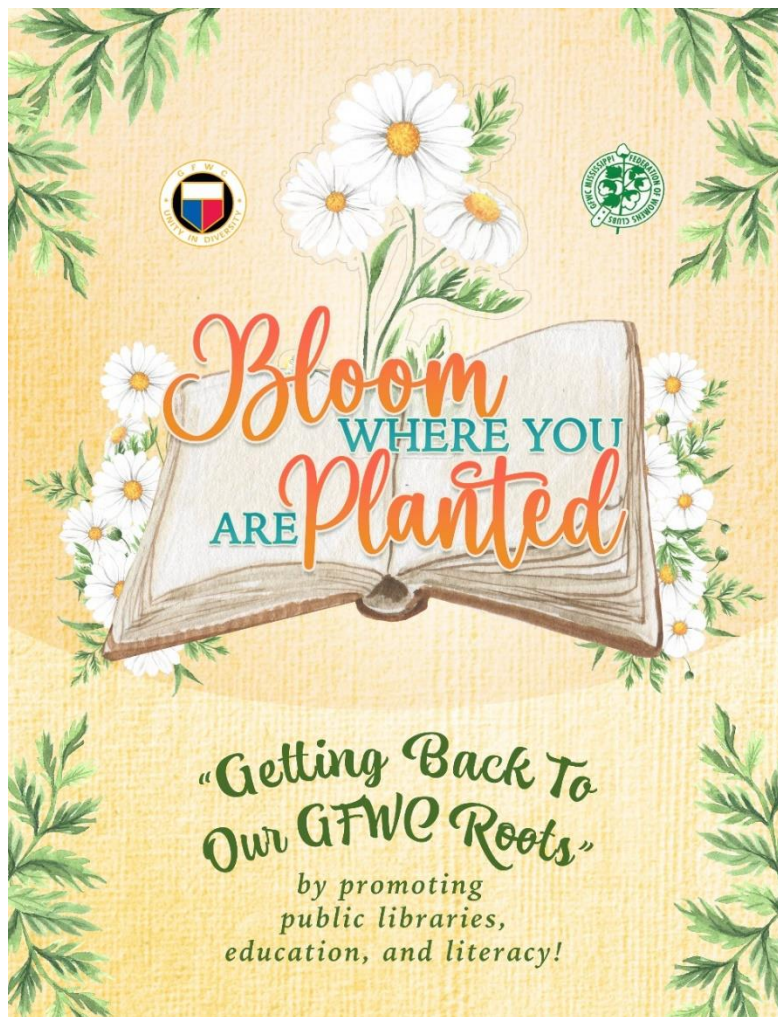


GFWC- Mississippi Federation of Women's Clubs, Inc.

2022 – 2024 Manual



2022-2024 Administration
Theresa Buntyn, President

GFWC- Mississippi Federation of Women's Clubs, Inc.

Manual

2022
-
2024

The Mississippi Federation of Women's Clubs, Inc., a member of the General Federation of Women's Clubs, is an organization of women whose goal is personal enrichment leading to volunteer service that benefits the community, state, nation and world.



1st Edition – July 1, 2022

2nd Edition – July 2023

TABLE OF CONTENTS

Section 1

| | |
|--|-----|
| A Letter from GFWC-MFWC President | 1-1 |
| GFWC-MFWC Important Dates for 2020-2022 Administration | 1-3 |
| GFWC-MFWC President's Special Project for 2020-2022 Administration | 1-6 |

Section 2 – General Federation of Women's Clubs – Your International Organization

| | |
|---|-----|
| A Letter from GFWC International President | 2-2 |
| GFWC 2020-2022 Executive Committee | 2-3 |
| GFWC-Southern Region Executive Committee | 2-3 |
| 2022 Southern Region Conference Invitation | 2-4 |
| 2023 Southern Region Conference Save the Date | 2-5 |

Section 3 – GFWC-Mississippi Federation of Women's Clubs, Inc. – Your State Organization

| | |
|--|-----|
| About the GFWC-MFWC..... | 3-2 |
| A Brief History of the GFWC-MFWC, Inc. 1898 – 2022 | 3-3 |
| GFWC-MFWC Past State Presidents 1989 – 2022 | 3-5 |
| GFWC-MFWC 2022-2024 Directory..... | 3-7 |
| GFWC-MFWC Constitution, Bylaws and Standing Rules | 3-7 |

Section 4 – Awards, Contests, Grants & Scholarships Guidelines & Rules

| | |
|--|------|
| GFWC Members Portal..... | 4-2 |
| GFWC Awards | |
| GFWC Community Impact Program Award..... | 4-2 |
| GFWC Jennie Award | 4-3 |
| GFWC Contests | |
| GFWC Newsletter Contest..... | 4-3 |
| GFWC Website Contest | 4-4 |
| GFWC Photography Contest..... | 4-4 |
| GFWC Writing Contests..... | 4-5 |
| GFWC Creative Arts Waiver..... | 4-5 |
| GFWC Grants | |
| Membership Grants | 4-5 |
| MFWC Categories | |
| MFWC Mississippi Craft Exhibits | 4-6 |
| Youth Art Contest | 4-6 |
| Youth Art Challenge Contest | 4-7 |
| Books Contests | |
| Scrapbooks | 4-8 |
| Yearbooks | 4-9 |
| GFWC- MFWC Awards, Grants & Scholarships | |
| GFWC-MFWC "Club of the Year" Award | 4-10 |
| GFWC-MFWC "Clubwoman of the Year" Award | 4-11 |
| GFWC-MFWC "Juniorette of the Year" Award..... | 4-12 |
| MS Leadership Education and Development Seminar (MS LEADS) | 4-12 |
| GFWC LEADS..... | 4-13 |
| GFWC-MFWC Challenge Grant..... | 4-14 |

Hebron Memorial Scholarship..... 4-14

GFWC-MFWC Sarah Peugh Butterfly Scholarship 4-15

Section 5 – Club Resources Materials and Reporting Forms

GFWC Resources

 GFWC Clubwoman Magazine Subscription Form..... 5-2

 GFWC Recognition Pins 5-2

 Club Anniversary Order Form..... 5-2

 GFWC Affiliates..... 5-2

MFWC Resources & Forms

 GFWC-MFWC Ways and Means 5-4

 GFWC-MFWC Change of Contact Information Form 5-4

 GFWC-MFWC Club History Report Form..... 5-4

 GFWC-MFWC State Dues Form 5-5

 GFWC-MFWC District Dues 5-5

 GFWC-MFWC Reporting Guidelines for 2022-2024 Administration 5-6

 Special Reporting Tips..... 5-7

 GFWC-MFWC Special Project Forms 5-8

 Special Note for All Applications/Forms..... 5-8

Section 6 – Collect for Clubwomen

History of Mary Stewart’s Collect For Clubwomen 6-1

Collect For Clubwomen Back page

GFWC-Mississippi Federation of Women's Clubs, Inc.



Welcome to the 2022-2024 GFWC Mississippi Administration

I am honored to serve as GFWC Mississippi President for the next two years. I am excited to work alongside our great group of state officers, chairmen, district officers, club presidents, and all our members to achieve our goal of enriching the lives of others through our volunteer efforts within our communities. I sincerely appreciate our clubs continuing to contribute money and work on projects that provide a needed impact in our local communities. In addition, our clubs support arts, preserve natural resources, advance education, promote healthy lifestyles, encourage civic involvement, and work toward peace and understanding.



Although these are unprecedented times, that took us by surprise, we will navigate the challenges together and discover great opportunities along the way, as we always do. Together MFWC club members have proven that we are resilient and amazing. My appreciation to each of you.

The theme of this administration is "Getting Back to Your Roots by Promoting Public Libraries, Education and Literacy. I look forward to sharing how we will continue to promote our public libraries and education. But, first, I want to share with you my WHY statement. Why did I choose to promote public libraries, education, and literacy as my PSP.

My WHY statement is: To engage others in finding their passion and purpose to improving lives by sharing the example of serving others. That is woven into my DNA.

Our family experienced learning disabilities and discovered public libraries played a fundamental role in childhood development. The daycare director "Mrs. Bonnie," weekly took our boys to the public library in Decatur. The library provided educational programs, including a summer reading program. Our boys would bring books home, and yes, sometimes we would only look at pictures, but those pictures would always tell a story that inspired the importance of literacy no matter the stage of development. Our local club participated in the "Summer Reading Program" each year, which allowed me to understand the importance of education and reading.

I have two other reasons why libraries are special to me. Mrs. Jessie Mae Everett, who served the federation in excess of 50 years, advocated for the Foundation of the Decatur Public library that was supported by the Newton County Board of Supervisors. After several years the Board of Supervisors decided to decrease the amount of financial support. Jessie Mae and my long-time friend Jeanette Thrash along with others, appeared before the board to demand at least level funding, that would prevent the library from closing. They were instrumental in securing continued level funding thus allowing the library to continue to meet the needs of the community. Later, Mrs. Jeanette partnered with East Central Community College to ensure we had a location for the library in Decatur. She was instrumental in renaming The Decatur Public Library the Jessie Mae Everett Public Library. Our club donates books in memory of deceased members and club family members and provides monetary donations to meet educational needs.

My last Why is the memorable and meaningful events during my term as President of Decatur Woman's Progressive Club. First, I had the opportunity to honor local authors at the "Decatur Authors Tea."

At the Decatur Public Library. A large crowd from the Decatur area attended the event to honor local authors for their contributions to writing books, poems, short stories, plays, and newspaper articles. One of our most famous authors commented, "You should do this every year." I wish I had.

Our public libraries improve the literacy levels of individuals and support life -long learning for education.

The butterfly effect teaches us that small things matter, **and we are all connected to a more extensive system.** Our actions today are the results of previous actions, and this could, in turn, lead to future action. With one small project or gesture, you can Make a Difference.

In the next two years, please join me to promote public libraries, education, and literacy in our local communities and across our state for our President's Special Project 2022-2024.

In Appreciation for Your Volunteerism,
Theresa Buntyn

GFWC-MFWC IMPORTANT DATES 2022-2024 ADMINISTRATION

2022

| | |
|----------------|--|
| June 25-28 | GFWC 2022 Annual International Convention, Hilton New Orleans Riverside, New Orleans, LA |
| June 28 | Installation of 2022-2024 GFWC Officers and Adjournment |
| June 29 | Post - Convention GFWC Board of Directors |
| July 23 | MFWC Finance Committee & Executive Committee Meeting MFWC Summer Board Meeting & Summer Institute Meeting |
| August 18-21 | GFWC Board Directors Meeting, Fairmont Washington, DC-Georgetown |
| TBD | MFWC Juniorette Retreat |
| October 20 -23 | GFWC Southern Region Conference, Jekyll Island, Georgia |
| November 1 | MFWC State Club Dues must be postmarked by this date each year to receive Honor Club status |
| December 7 | GFWC Holiday Reception Headquarters Washington, DC |

2023

| | |
|-------------|--|
| January 1 | MFWC State Club Dues must be postmarked by this date each year for club reports to be judged and to be eligible for awards |
| January 1 | MFWC District Club Dues . Please note: District Dues must be sent to your District Treasurer. |
| February 1 | MFWC Club Reports must be postmarked by this date each year for reports to be judged |
| February 1 | MFWC Challenge Grant applications, Hebron Memorial Scholarship and GFWC Writing Contest entries must be postmarked by this date each year to be eligible for consideration |
| February 10 | MFWC Clubwoman of the Year Award applications, Juniorette of the Year Award applications and MFWC LEADS applications must be postmarked by this date each year to be eligible for consideration |
| February 15 | MFWC Scrapbooks and Yearbooks must be postmarked by this date each year to be eligible for consideration |
| February 18 | MFWC Finance Committee & Executive Committee Meeting MFWC Winter Board Meeting |
| March 1 | Jennie Award nominations, Sarah Peugh Butterfly Scholarship application and Club History Form must be postmarked by this date each year to be eligible for consideration. |
| March 8 | Women's History Celebration |
| March 15 | Newsletter Contest entries must be sent via postal mail and postmarked by March 15 th in the year in which they will be judged |
| March 15 | Website Contest entries must be made via email and submitted by 11:59 p.m. on March 15 th in the year in which website entries will be judged |
| March 4 | Northern District Convention |
| March 11 | Southern District Convention |

GFWC-MFWC IMPORTANT DATES 2022-2024 Administration

2023

| | |
|---------------|--|
| March 25 | Central District Convention |
| April 9 | Easter |
| April 20-22 | MFWC Annual State Convention |
| April 23-29 | GFWC Volunteers in Action Week |
| April 24 | General Federation Day |
| June 10-12 | GFWC 2023 Annual International Convention, Louisville Marriot Downtown, Louisville, Kentucky |
| July 10 | MFWC Finance Committee & Executive Committee Meeting, Zoom Video Conferencing |
| July 15 | MFWC Summer Board Meeting, Zoom Video Conferencing |
| July 22 | MFWC Summer Institute Meeting, MLC Headquarters, Jackson, MS |
| July 29 | MFWC Juniorette Retreat, MLC Headquarters, Jackson, MS |
| September 30 | GFWC National Day of Service |
| September 30 | St. Jude Walk/Run, Memphis, TN or National Virtual Walk/Run |
| October 26-29 | GFWC Southern Region Conference, IP Resort & Spa, Biloxi, MS |
| October 22-28 | GFWC Advocates for Children's Week |

2024

| | |
|-------------|--|
| January 1 | MFWC State Club Dues must be postmarked by this date each year for club reports to be judged and to be eligible for awards |
| January 1 | MFWC District Club Dues . Please note: District Dues must be sent to your District Treasurer. |
| February 1 | MFWC Club Reports must be postmarked by this date each year for reports to be judged |
| February 1 | MFWC Challenge Grant applications, Hebron Memorial Scholarship and Writing Contest entries must be postmarked by this date each year to be eligible for consideration |
| February 10 | MFWC Clubwoman of the Year Award applications, Juniorette of the Year Award applications and MFWC LEADS applications must be postmarked by this date each year to be eligible for consideration |
| February 12 | Finance Committee & Executive Committee Meeting |
| February 15 | MFWC Scrapbooks and Yearbooks must be postmarked by this date each year to be eligible for consideration |
| February 17 | Winter Board Meeting |
| February 22 | GFWC Community Impact Program Award material must be postmarked by this date to be eligible for consideration |
| March 1 | Sarah Peugh Butterfly Scholarship application and Club History Form must be postmarked by this date each year to be eligible for consideration. |

GFWC-MFWC IMPORTANT DATES 2020-2022 ADMINISTRATION

2024

| | |
|----------------|--|
| March 2 | Central District Convention, Location to be announced at Winter Board Meeting in February 2024, hosted by the Raleigh Woman's Club, Gavel Club and Leading Ladies Club |
| March 6 | Women's History Celebration |
| March 9 | Southern District Convention , Location to be announced at Winter Board Meeting in February 2024 |
| March 15 | Newsletter Contest entries must be sent via postal mail and postmarked by March 15 th in the year in which they will be judged |
| March 15 | Website Contest entries must be made via email and submitted by 11:59 p.m. on March 15 th in the year in which website entries will be judged |
| March 23 | Northern District Convention , Location to be announced at Winter Board Meeting in February 2024 |
| March 31 | Easter |
| April 21-27 | GFWC Volunteers in Action Week |
| April 24 | General Federation Day |
| April 25-27 | MFWC Annual State Convention, Eagle Ridge Conference Center, Raymond, MS |
| June 29-July 2 | GFWC 2024 Annual International Convention, Hilton Chicago, Chicago Illinois |
| July 2 | Installation of 2024-2026 GFWC Officers and Adjournment |

GFWC-Mississippi Federation of Women's Clubs, Inc.
President's Special Project
2022-2024

Our theme for the 2022-2024 administration is, *"Bloom Where You Are Planted – Getting Back To Our GFWC Roots – by promoting public libraries, education and literacy!"*

Throughout its history, GFWC has advanced education, partly through the establishment and support of public libraries. In the 1930s, the American Library Association credited the GFWC for establishing 75 percent of America's public libraries. Education remains a critical factor in how Americans learn and connect with communities. GFWC club women promote education in both children and adults. GFWC Education and Libraries Community Service Program's purpose is to ensure club projects in the Education and Libraries Community Service Program are designed to foster schools and other educational institutions and opportunities and promote libraries and literacy, and the love of a good book.



Mississippi Federated Woman's clubs have significantly impacted the establishment and supported libraries since 1925. Originally nationally known, Andrew Carnegie established the library system by developing the Carnegie Foundation to establish libraries. Mississippi benefited from this Foundation, and eleven libraries were erected in ten communities across the state from 1908 to 1916. However, the Mississippi Federation of Women's Clubs made a significant impact across the state for public libraries. Our Mississippi Library Commission noted the following quote "Without the support and steadfast resolve of the women in the various women's clubs in Mississippi, public libraries would have taken a back-row seat to many other community projects. However, in 1925, the state federation of women's clubs determined to ask for library service in every county in the state. In 1926 the Mississippi Library Commission was established and adopted the same goal as the women's clubs. It would take more than 50 years to accomplish this goal. Wow! Does what our club members do across our state make a difference?

Our public libraries are our educational institutions. These shared libraries, along with college libraries, and academic and educational opportunities, improve the literacy levels of individuals and support life -long learning for education.

Please join me in the next two years to promote public libraries, education, and literacy in our local communities and across our state for our President Special Project 2022-2024.

Let's get back to our GFWC Roots by promoting public libraries, education, and literacy.

Theresa

**PRESIDENTS SPECIAL PROJECT
SERVICE PROJECTS FOR CLUBS 2022-2024**

September 2022

Celebrate Library Card Sign-up Month in September with an event such as a Fall for Books Funfest for children with games, face painting, prizes, and a library card sign-up table. Increase sign-up for Library Cards at your Local Library

December 2022

Create a Christmas tree or decoration and donate it to the public library for the month. Or decorate a car or float and enter a Christmas parade with the club and public library.

March 2023

Decorate a chair for Dr. Suess Day and give it to the local library or school library.

April 2023

State convention service project "BIG HOUSE BOOKS"

June 2023

Club participation in the summer reading program

September 2023

Organize literacy events to "get your school reading." Organize book-themed events, such as a book walk, book fair, book bingo, book drive or swap, book reading challenge, a book club of "reading buddies," or a book report contest on "My Favorite Book." Donate or solicit prizes for awards.

December 2023

Member read a Christmas Story o to a group of children from an elementary school, daycare etc. or club provide a Christmas stem activity during December. <https://www.steamsational.com/christmas-science-experiments/>

March 2024

Organize a Read Across America event in March during National Reading Month. Consult the Read Across America website (<https://www.nea.org/professional-excellence/student-engagement/read-across-america>) for suggested books, event ideas, and promotional materials for your local library or schools.

April 2024

Convention Final service project to be determined.



GENERAL FEDERATION *of* WOMEN'S CLUBS

Your International Organization



Dear Fellow Members,

Welcome to the 2022-2024 GFWC Administration. I am humbled and honored to serve as your 54th GFWC International President. Please join me in embracing the leadership and service opportunities that will be ours over the next two years. Together, let's serve both GFWC stateside and our communities around the world.

The 2020-2022 Administration brought us outstanding accomplishments, such as celebrating the 100th Anniversary of the purchase of our beloved Headquarters; celebrating the generosity of our GFWC members, clubs, and states on the incredible Campaign for the Future; and recognizing the 20th Anniversary of our amazing Leadership Educational and Development Seminar (LEADS)! And most importantly, over these past two years, we learned nothing stops a GFWC clubwoman!

In preparing for these next two years, my hope for GFWC is to continue strengthening the many facets of leadership necessary to ensure the future and sustainability of this organization. I thank our dedicated GFWC leaders: the GFWC Executive Committee, Chairmen, and Committee Members, for developing this Club Manual, which includes important information on our GFWC Special Programs, GFWC Community Service Programs, and GFWC Advancement Plans. Please share this information with your club leadership and club members!

Always remember every gift you share as a member of GFWC has tremendous value and significance. The common bond of compassion, service, and philanthropy connects us all, no matter how young or old we are and no matter where we live. For it is through the giving and sharing of GFWC that we discover its true reward.

So together, let's Dream Big...Sparkle More...and we will indeed Shine Bright, for the Federation's greatest gifts are certainly YOU, the timeless, priceless members of GFWC. I want to thank each of you for bringing such brilliant Light to the lives of others!

Live the Volunteer Spirit every day!

Debra A. Strahanoski
GFWC International President

GENERAL FEDERATION OF WOMEN'S CLUBS 2022-2024 GFWC EXECUTIVE COMMITTEE

GFWC International President

Debra "Deb" Strahanoski

(Joliet, IL)

[Bio](#)

GFWC President-elect

Suellen Brazil

(Daphne, AL)

GFWC First Vice-President

Wendy Carriker

(Mount Airy, NC)

GFWC Second Vice-President

Jolie Frankfurth

(Tampa, FL)

GFWC Secretary

Mary Beth Williams

(Colorado Springs, CO)

GFWC Treasurer

Becky C. Wright

(Banner, MS)

Director of Junior Clubs

Katie Moydell

(Columbia, SC)

Parliamentarian

Diane Addante

(Naperville, IL)

2022-2024 GFWC – SOUTHERN REGION EXECUTIVE COMMITTEE (Aruba, Alabama, Florida, Georgia, Mississippi and South Carolina)

President

Joyce Johnston

(Florida)

Vice-President

Laurie O'Kelly

(South Carolina)

Secretary

Dr. Tammie M. McCoy

(Mississippi)

Treasurer

Shari Carter

(Georgia)

Parliamentarian

Cathy Geary

(Florida)



**2022 GFWC Southern Region Conference
October 21-23, 2022
Jekyll Island, GA**

Set your compass and follow the beacon light to Jekyll Island, where the Southern Region will come together for networking, learning, flip flops and federated fellowship!

The Call will be posted on the GFWC Southern Region website as soon as it is available.

Support our Georgia sisters with the purchase of a beautiful Patron Pin as they fundraise for SRC 2022!

Download the Patron Pin Order Form below.

[SRC 2022 Pin Order Form](#)



**The Magic of Mississippi
Imperial Palace Casino Resort and Spa
Biloxi, Mississippi**

Experience the Magic of the Historic Biloxi Lighthouse followed by a Luncheon/Tea hosted by the Gulfport Women's Club or enjoy the Magic of Relaxation with a Spa Day at the IP Senses Spa.

Look for details and reservation link on GFWC Southern Region FB page soon!



GFWC-Mississippi Federation of Women's Clubs, Inc.

Your State Organization

ABOUT THE GFWC-MISSISSIPPI FEDERATION OF WOMEN'S CLUBS, INC.

GFWC-MFWC Purpose

The purpose of the GFWC-MFWC shall be to bring the women of the state together for mutual helpfulness and for united action in promoting the general welfare of the State.

GFWC-MFWC Motto

At the first meeting of the Mississippi Federation, the delegates adopted the motto of growth still used by the Federation today, "First the blade, then the ear, after that the full corn in the ear". This quotation is from Mark 4:28.

GFWC-MFWC Mission Statement

The GFWC-Mississippi Federation of Women's Clubs, Inc., a member of the General Federation of Women's Clubs, is an organization of women whose goal is personal enrichment leading to volunteer service that benefits the community, state, nation and world.

GFWC-MFWC Emblem

During the presidency of Josie Frazee Cappleman of Okolona, a committee was appointed to choose an emblem for the GFWC-MFWC. In April 1903, a design submitted by Julia Knox Houseman, a clubwoman artist of note, was approved as the official emblem of the GFWC-MFWC. This was a circlet of pink enamel edge with gold. Inscribed around the circlet in black letters were the words "Mississippi Federation of Women's Club" and within the circlet was a graceful sprig of the Federation flower, the cotton boll, flower and leaves. In 1914, feeling that green was more in keeping with the cotton plant and realizing that pink enamel changed color when fired, Colie Covington introduced a resolution to change the Mississippi Federation colors from pink and white to green and white. This was unanimously adopted. The emblem remained the same in design but is now green and white. The initials GFWC for General Federation of Women's Clubs have been added in the circlet preceding Mississippi Federation of Women's Clubs.

GFWC-MFWC 2022-2024 President's Special Project

For the 2022-2024 Administration, President Theresa Buntyn has picked *Getting Back to our Roots by promoting public libraries, education and literacy*. The GFWC-MFWC will be closely with our public and school libraries to promote education and literacy.

GFWC-MFWC President's Administration Theme

The GFWC-MFWC President's Theme for the 2022-2024 administration is *Bloom Where You Are Planted, "Getting Back To Our GFWC Roots" by promoting public libraries, education, and literacy!*

Other Programs and Projects to Receive Special Emphasis During the 2022-2024 Administration

1. **Mississippi Public Broadcasting (MPB)** is a longtime friend of the GFWC-MFWC. The GFWC-MFWC was instrumental in the establishment of Educational Television in Mississippi. This administration's goal is to renew and strengthen ties with this very valuable organization by placing a special emphasis on supporting MPB.
2. **Mississippi State Institutions**, specifically the Ellisville State School in Ellisville, MS, Mississippi School for the Deaf and Mississippi School for the Blind located in Jackson, MS, Mississippi State Hospital in Whitfield, MS, East Mississippi State Hospital in Meridian, MS and State Veteran's Homes in Collins, Jackson, Kosciusko and Oxford, MS.

3. **ESO.** Epsilon Sigma Omicron (ESO) is an honorary educational society open to all per-capita paying GFWC federated club members. ESO provides clubwomen with a structured reading program that is educational and stimulates a desire for self-improvement.
4. **Mississippi Library Commission (MLC).** By statute, the GFWC-MFWC is the only organization in the state to hold a seat on the five-member Board.

A BRIEF HISTORY OF GFWC-MFWC, INC. 1898-2022

In 1898, Mississippi women launched out into broader fields by the organization of the GFWC-MFWC and joined hands with other women in the nation in an effort to bring about a deeper appreciation of all that is true and beautiful in life by service to humanity.

Mrs. Fannie Clark Coleman, of the 20th Century Club in Kosciusko, had become interested in a new organization, the General Federation of Women's Clubs, through articles published in *Harper's Bazaar*. She and her fellow club members discussed the idea of a Mississippi state organization and decided to call a meeting of representatives of all well-known women's clubs in the state.

With hope and confidence, delegates from several Mississippi towns met at the courthouse in Kosciusko on May 25, 1898. The Kosciusko club served as hostess. The constitution and bylaws for the new organization were read and adopted. Mrs. D.N. Hebron of Vicksburg served as chairman and later was elected the first president. In 1904, it became a member of the General Federation of Women's Clubs, the largest women's volunteer organization in the world.

As the clubs organized, chiefly for the purpose of mutual improvement, naturally the first work outlined by the new administration was along educational lines. Scholarships were established in state colleges for deserving girls, books were assembled for traveling libraries to be loaned to rural schools and traveling art exhibits were purchased and sent around to the schools.

Local clubs determine their own activities within the guidelines of the General Federation of Women's Clubs and the GFWC-Mississippi Federation of Women's Clubs, Inc. which address the diverse needs of their communities, recognize women's past achievements, encourage literacy for children and adults and encourage good health practices. GFWC-MFWC joins forces with other organizations to increase awareness of and prevent child abuse and domestic violence. Members of this volunteer service organization strive to serve their local communities, states, the nation and the world.

Among the projects of this organization during its more than 100-year history are:

- In 1898, established a traveling library that was predecessor of the bookmobile
- Supported the Child Labor Law
- Sold war bonds to purchase WWII bombers
- Helped organize and support the Mississippi Library Commission
- Was instrumental in establishment of Mississippi Forestry Commission
- Helped organize and establish Mississippi Educational Television (now MPB)
- Built two schools in Honduras through CARE
- Planted two entrances into Mississippi through the Avenue of Magnolias
- Established 75% of Mississippi public libraries
- Built four cabins, a bathhouse, a pavilion, a pier, a nature walk and a butterfly garden at the Mississippi State Hospital at Whitfield

- Purchased computer and other technical equipment for the Mississippi School for the Blind
- Built playground for the Mississippi School for the Deaf and sponsored a scholarship for deaf students to attend NASA Space Camp in Huntsville, AL
- Makes monetary and other contributions to the Mississippi School the Deaf, Mississippi School of the Blind and Mississippi State Hospital at Whitfield on an annual basis
- Placed a book on Lupus and a *History of the Mississippi Federation of Women's Clubs* in all public libraries in the state
- Purchased office equipment for the Lupus Foundation in Jackson, MS
- Donated and raised funds to establish a breast cancer screening program with the Mississippi Department of Health for younger, underserved women
- Provides a large percentage of the scholarships to HOBY (Hugh O'Brian Youth) Leadership seminars
- Sponsors Youth Art contest for students in grades 1-12
- Gives scholarships yearly to women for undergraduate and graduate work
- Built three habitat homes, provided the owners with household items and new furniture, and gave thousands of dollars in Lowe's gift cards for supplies for the 2006-2008 President's Special Project Habitat for Humanity as of 12/31/2007
- Raised over \$80,000 in cash, food cards, gas cards and toys for the first ever Pediatric Care Family Emergency Needs Fund at Blair E. Batson Hospital for Children for the 2008-2010 President's Special Project as of 12/31/2009
- Volunteered 10,264 hours along with \$131,035 donation for the 2010-2012 President's Special Project - Feeding Fellow Mississippians as of 12/31/2011.
- Volunteered on 450 projects for 24,000 hours and donated \$81,000 for the 2012-2014 President's Special Project - Honoring Past Gifts While Celebrating The Present...Freedom To Volunteer! as of 12/31/2013.
- Volunteered on 379 projects for 24,000 hours and donated \$186,636 for cancer services and research, including contributions to establish the Hope Lodge in Jackson, MS to the 2014-2016 President's Special Project – *Bringing Hope – Changing Lives* as of 12/31/2015.
- Volunteered on 200 projects for 2,932 hours and donated \$62,012 for the 2016-2018 President's Special Project – EXPRESS Yourself! Art at the T. K. Martin Center on the campus of Mississippi State University with \$30,337 of that amount establishing the GFWC-MISSISSIPPI FEDERATION OF WOMEN'S CLUBS, INC. EXPRESS YOURSELF ART ENDOWMENT FOR EXCELLENT.
- Volunteered on 434 projects for 22,209 hours and donated \$67,845 for heart disease research and services, including contributions of \$24,000 to the Mississippi Chapters of the American Heart Association in Jackson, MS to the 2018-2020 President's Special Project – *Empowering the Heart to Make A Difference: Detect. Correct. Protect.* as of 12/31/2019.

GFWC-MFWC PAST STATE PRESIDENTS 1898 - 2022

| President | City | Term |
|--------------------------|-----------------|-----------|
| * Elizabeth Hebron | Vicksburg | 1898-1900 |
| * Daisy Weems | Meridian | 1900-1902 |
| * Josie Frazee Cappleman | Okolona | 1902-1904 |
| * Mattie Lott | Meridian | 1904-1906 |
| * Elizabeth Jones | Crystal Springs | 1906-1908 |
| * Etta Mills | McComb | 1908-1910 |
| * Daisy Lampkin | Friars Point | 1910-1912 |
| * Anne Wright | Jackson | 1912-1914 |
| * Emily Price | Magnolia | 1914-1916 |
| * Marjorie McGehee | Como | 1916-1918 |
| * Janie Saunders | Swan Lake | 1918-1920 |
| * Katherine Covington | Summit | 1920-1922 |
| * Mrs. J. C. Hardy | Gulfport | 1922-1924 |
| * Blanche Ralston | Coahoma | 1924-1926 |
| * Susie V. Powell | Jackson | 1926-1928 |
| * Catherine Haley | Okolona | 1928-1930 |
| * Rosabel Foreman | Meridian | 1930-1932 |
| * Mrs. O. B. Taylor | Jackson | 1932-1934 |
| * Lillian Coulter | Columbia | 1934-1936 |
| * Mamie Wilson | Hazlehurst | 1936-1938 |
| * Gladys Nash | West Point | 1938-1940 |
| * Birdie Ellis | Meridian | 1940-1942 |
| * Willie Beckett Howorth | West Point | 1942-1944 |
| * Orell Pitard | Jackson | 1944-1946 |
| * Corrine Mitts | Enterprise | 1946-1948 |
| * Hattie Gautier | Pascagoula | 1948-1950 |
| * Effie Neal | Jackson | 1950-1952 |
| * Zou Eddie Pierce | Greenwood | 1952-1954 |
| * Doris Patterson | Pontotoc | 1954-1956 |
| * Anna Mary Davis | Hattiesburg | 1956-1958 |
| * Evelyn Davis | Union | 1958-1960 |
| * Fannie Lois Kilpatrick | Fulton | 1960-1962 |
| * Evelyn Burson | Long Beach | 1962-1964 |
| * Mary Lou McKie | Pickens | 1964-1966 |
| * Effie Perry | Philadelphia | 1966-1968 |
| * Miriam Simmons | Columbia | 1968-1970 |
| * Kitty Grafton | Picayune | 1970-1972 |
| * Jonnie Riley | New Hebron | 1972-1974 |
| * Elizabeth Powers | Greenwood | 1974-1976 |
| * Peggie Herrington | Natchez | 1976-1978 |
| * Jean Brett | Laurel | 1978-1980 |
| * Rachel Malone Jackson | Cleveland | 1980-1982 |
| * Betty Jo Dulaney | Tunica | 1982-1984 |
| * Gladys Jackson | Jackson | 1984-1986 |

GFWC-MFWC PAST STATE PRESIDENTS 1898 - 2022

| President | City | Term |
|---------------------|---------------|-----------|
| Ivous Sisk | Fulton | 1986-1988 |
| * Julia Algood | Jackson | 1988-1990 |
| * Mary Arndt | Ocean Springs | 1990-1992 |
| * Rowena Drinkwater | Clinton | 1992-1994 |
| Martha Fisher | Blue Mountain | 1994-1996 |
| * Sue Thompson | Meridian | 1996-1998 |
| Jo Anne Reid | Ackerman | 1998-2000 |
| Tommye Rosenbaum | Walnut Grove | 2000-2002 |
| Celia Fisher | Okolona | 2002-2004 |
| Deborah Dickens | Prentiss | 2004-2006 |
| Judy Thomas Martin | Raleigh | 2006-2008 |
| Carolyn C. Huey | Picayune | 2008-2010 |
| Tammie M. McCoy | Pontotoc | 2010-2012 |
| Suzanne Byrd Poynor | Florence | 2012-2014 |
| Darlene C. Adams | Picayune | 2014-2016 |
| Tinker Forrester | Ackerman | 2016-2018 |
| Becky C. Wright | Banner | 2018-2020 |
| Sherri E. Reid | Petal | 2020-2022 |

* deceased

GFWC- MISSISSIPPI FEDERATION OF WOMEN'S CLUBS, INC.

2022-2024 DIRECTORY

GFWC-Mississippi Federation of Women's Clubs, Inc. 2022-2024 Directory will be provided as a separate document. Please contact Lisa A. Harris at lisaharris@outlook.com for an electronic copy of our directory. You will need to provide your name and your club's name for verification. We are doing this to protect against identity theft of your contact information and photograph. Please do not share the information in this directory with anyone outside our organization.

2022-2024 CONSTITUTION, BYLAWS & STANDING RULES

The GFWC-Mississippi Federation of Women's Clubs, Inc. Constitution, Bylaws and Standing Rules is provided as a separate document under the title of Governance. This document is available for viewing, downloading and printing from our website at http://www.gfwc-mfwc.org/GFWC_MFWC_Club_Resources.html.

Awards, Contests, Grants & Scholarships Guidelines & Rules



AWARDS, CONTEST & GRANTS GUIDELINES FOR GENERAL FEDERATION OF WOMEN'S CLUBS

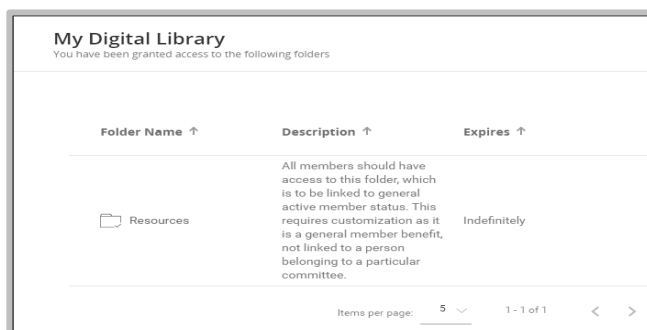
GFWC MEMBERS PORTAL

Among the many member benefits offered, GFWC's Member Portal has a more sophisticated documents library than www.gfwc.org. MemberSuite, the system hosting the Member Portal, allows you to download documents much faster! And after August 1, GFWC resources will only be available by logging into the GFWC Member Portal and clicking on "My Digital Library."

Use this link to access the GFWC Member Portal: <https://gfwc.users.membersuite.com/home>.



Once you have signed into the Member Portal, click your profile button, from the drop-down list, click on My Digital Library. Click on "Resources" folder, and it will bring up all resources that you have been granted access to. As has been the case on www.gfwc.org, documents are filed according to the name of each document. In addition, you'll be able to see the date and time that the document was last updated—a feature not available on GFWC's website.



If you are having difficulties logging in, please contact GFWC staff Monday – Friday, 9 am - 4 pm, by emailing gfwc@gfwc.org or by calling 1-800-443-4392.

GFWC AWARDS

GFWC Community Impact Program Award

The newly updated GFWC Community Impact Program Award offers GFWC clubs' financial incentive to implement projects designed to impact a specific problem in their community. The CIP Award is designed to accommodate the many ways that clubs currently function and to provide added flexibility in the implementation of up to three projects that have a meaningful impact on a particular problem, from "done in a day" efforts to those that could require more rigorous planning and implementation.

Projects MUST be accomplished during the program award period of January 1, 2022, to December 31, 2023.

Additional information, including application form, can be downloaded from the GFWC Member Portal, My Digital Library, Resources, Letter C, Club Manual, Awards and Contest.

Postmark Deadline:

Entry must be postmarked by **February 22, 2024**. Please note: if the postmark deadline for an application /form falls on a Sunday or Holiday, the application/form MUST be postmarked prior to postmark deadline.

Mail To:

Mail entries to Pollyanna Robelon, Community Impact Program Award Chairman.

GFWC Jennie Award

The GFWC Jennie Award honors one clubwoman from each GFWC Region for outstanding commitment to club, community, and family. They are chosen by their clubs to compete at state, region, and national levels for their outstanding personal commitment to club, community, and family.

The GFWC Jennie Award is named in honor of GFWC's founder, Jane Cunningham Croly, who wrote for national newspapers under the pseudonym, "Jennie June." The award highlights those extraordinary clubwomen who epitomize her spirit of independence, courage, and persistence in purpose through their roles as volunteers within their clubs, elsewhere in the community, and as members of a family or extended family. Although GFWC has many awards for states and clubs, the GFWC Jennie Award is the only national honor that recognizes individual members for personal excellence. In fact, it is the highest honor bestowed by GFWC.

Additional information, including application form, can be downloaded from the GFWC Member Portal, My Digital Library, Resources, Letter C, Club Manual, Awards and Contest.

Postmark Deadline:

Entry must be postmarked by **March 1, 2023**. Please note: if the postmark deadline falls on a Sunday or a Holiday, the application/form must be postmarked prior to postmark date.

Mail To:

Mail entries to Theresa Buntyn, GFWC-MFWC President.

GFWC CONTESTS

GFWC sponsors a number of contests for individual members, clubs, and State Federations. For more information about each of these contests, including contact information for the national chairman, recommended contest ideas, rules, deadlines, and instructions on how to enter, read each Contest's section in the GFWC Club Manual.

GFWC Newsletter Contest

The GFWC Newsletter Contest encourages clubs and State Federations to establish a strong newsletter program aimed at increasing awareness about ongoing projects, programs, events and issues that affect GFWC members and communities. This type of publication need not be elaborate or lengthy. Substance is more important than style. A newsletter should be informative and generate enthusiasm, all while contributing to public relations outreach, membership recruitment and retention, and program development.

Additional information, including application form, can be downloaded from the GFWC Member Portal, My Digital Library, Resources, Letter C, Club Manual, Awards and Contest.

Postmark Deadline:

Entry must be postmarked by **March 15** of each year. Please note: if the postmark deadline falls on a Sunday or a Holiday, the application/form must be postmarked prior to postmark date.

Mail To:

Mail entries Jen Nowak, GFWC Newsletter Contest Chairman, 51 Glenn Drive, Wilbraham, MA 01095. *The envelope must be clearly marked GFWC Newsletter Contest.*

GFWC Website Contest

The Website Contest aims to challenge clubs and State Federations to employ their websites as membership tools with organized and updated content that presents a professional and credible source of information. A website that is updated weekly presents the information to your members and potential members in a timely manner. This is a great source to spread the word of Federation on the web.

Additional information, including application form, can be downloaded from the GFWC Member Portal, My Digital Library, Resources, Letter C, Club Manual, Awards and Contests.

Postmark Deadline:

The submission email must be received by 11:59 p.m. on **March 15** in the year in which website entries will be judged.

Email To:

Submissions must be made via email to CPRentries@charter.net. The subject line of the submission email must read Website Contest Entry.

GFWC Photography Contest

The GFWC Photography Contests encourages members' artistic expression and visual storytelling, while recognizing originality, visual impact, and technical skill in photography. GFWC offers two opportunities to participate in the Photography Contests, **THE WORLD IN PICTURES CONTEST** and **GFWC LIVING THE VOLUNTEER SPIRIT CONTEST**.

THE WORLD IN PICTURES CONTEST.

1. These photographs showcase the people, places, and things at home and around the world that impact our lives in a meaningful way, as expressed in these three categories:
 - a. **Our World Up Close** - Create a visual that offers a novel viewpoint or a macro image that takes the viewer into a whole new, tiny world.
 - b. **Natural Wonders** - Use wide angles and panoramas, or moody landscape images to showcase mountains, meadows, sandhills, rivers, waterfall, oceans, desert, or any other magnificent vista.
 - c. **Reflections** - Feature a setting, situation or landmark that brings back poignant memories, or captures a fleeting image reflected in glass, water, or another mirrored surface.
2. **GFWC Living The Volunteer Spirit Contest.** These photographs capture the special moments in the lives of GFWC clubwomen as they meet, plan, advocate, volunteer or celebrate, in groups or one-on-one.

Photography Contest Label:

Printable copies of the Photography Contest Label can be found on the GFWC-MFWC website by using this link: http://www.gfwc-mfwc.org/pdf/GFWC_MFWC_Forms/Photography_Contest_Label.pdf.

Additional information, including application form, can be downloaded from the GFWC Member Portal, My Digital Library, Resources.

Deadline:

Entry must be presented to the District Photography Contest Chairman **before 9:15 a.m. on the morning of your District Convention** with correct labeling properly attached and a signed GFWC Creative Arts Waiver included for each photograph submitted.

GFWC Writing Contests

Are you a storyteller? Share your creativity and inspire others. Use your own life experiences to create fictional narratives and poetry. GFWC sponsors this creative writing contest for members and community youth to foster community spirit, talents, and growth. Write with heart and soul but be mindful that the elements of a short story are vividly presented, namely the setting, characters, plot, conflict, climax, and theme. Display your talents and be rewarded for it!

There are four categories for entries:

- GFWC Member Short Story Writing Contest
- GFWC Member Poetry Writing Contest
- Youth Short Story Writing Contest
- Youth Poetry Writing Contest

Additional information, including application form, can be downloaded from the GFWC Member Portal, My Digital Library, Resources, Letter C, Club Manual, Awards and Contests.

Postmark Deadline:

Entry must be postmarked by **February 1** of each year. Please note: if the postmark deadline falls on a Sunday or a Holiday, the application/form must be postmarked prior to postmark date.

Mail To:

Mail entries to Deborah Warren, Writing Contest Chairman.

GFWC Creative Arts Waiver

A GFWC Creative Arts Waiver must be submitted in the following contests:

- GFWC Photography Contest
- GFWC Writing Contest (Poetry and Short Story)

Additional information, including application form, can be downloaded from the GFWC Member Portal, My Digital Library, Resources, Letter C, Club Manual, Awards and Contests.

GFWC GRANTS

GFWC grants are available to clubs to assist with recruitment efforts and to Districts to assist with club building efforts. Designated for each GFWC fiscal year, which begins July 1 and ends June 30, GFWC offers \$50 to clubs for member recruitment programs and \$100 to Districts for club-building programs.

To apply for a membership grant, contact GFWC@GFWC.org or call 202-347-3168 to receive an application. Return the form to GFWC at least 45 days prior to the event. GFWC will award no more than one grant per club or District per GFWC fiscal year.

AWARDS, CONTESTS, GRANTS & SCHOLARSHIPS GUIDELINES FOR GFWC-MISSISSIPPI FEDERATION OF WOMEN'S CLUBS, INC.

Mississippi Crafts Contest

1. Mississippi Crafts will be exhibited and judged at the District Level only. Your crafts exhibits may be the highlight of your District Convention. Please plan to participate.
2. Exhibits must be signed in at time of delivery and signed out at the conclusion of the convention.
3. Each entry must have a typed or printed label specifying the following: Clubwoman name, complete name of sponsoring club, the GFWC-MFWC District, and classification of the entry.
4. Entries must have been made during the current biennium.
5. Paintings may be matted and framed.
6. The classifications listed below are not inclusive. You may add to the classifications as needed.

- | | | |
|------------------------|-------------------------------------|-----------------------------|
| • Candlewick | • French Hand Sewing | • Sculpture |
| • Counted Cross Stitch | • Fine Sewing | • Stamping |
| • Cross Stitch | • Holiday Decorations | • Stenciling |
| • Crewel | • Knitting | • Wall Hanging |
| • Crochet | • Metal Crafts | • Wearable Art – Apparel ** |
| • Ceramics | • Miss. Creations* | • Wearable Art – Jewelry ** |
| • China Painting | • Needlepoint | • Weaving |
| • Decorative Painting | • Painting (Watercolor, oils, etc.) | • Wood Working |
| • Decoupage | • Paper Mache | |
| • Dolls | • Pottery | |
| • Embroidery | • Quilting | |

* Mississippi Creations – Entries must be made from natural, Mississippi products, such as wood weeds, bark, shells, rice, soybeans, etc.

** Wearable Art – Clothing/millinery may be made from hand-loomed, knitted, crocheted or any other handmade fabric. Clothing/millinery may also be purchased, but designs must be original. Jewelry of any material is acceptable. Designs must be original.

GFWC-MFWC Clubwoman Arts/Craft Exhibit Card:

Printable copies of the GFWC-MFWC Clubwoman Arts/Craft Exhibit Card can be found on the GFWC-MFWC website at https://www.gfwc-mfwc.org/pdf/GFWC_MFWC_Forms/Recurring/Arts_Craft_Exhibit_Cards_2020.pdf.

Deadline:

Entries must be presented to the District Arts/Craft Contest Chairman before **9:15 a.m. on the morning of your District Convention.**

Youth Art Contest

District First Place entries go directly to the State level competition.

Classes:

- A – Students receiving lessons from private teachers
- B – Students receiving instructions as part of a school curriculum with a certified art teacher

C – Students receiving no art instruction from private or certified art teacher; classroom teachers giving art instruction in the classroom would fall in this category

Divisions:

Division 1 – Kindergarten – Grade 1

Division 2 – Grades 2 & 3

Division 3 – Grades 4, 5, & 6

Division 5 – Grades 10, 11, & 12

Rules:

1. Entries must be sponsored by a GFWC-MFWC member Club.
2. Each Club may submit two entries in each of the five divisions of the three classes.
3. Typewritten identification cards must be firmly **attached to the back of each entry**. The label should contain the following information: Class, Division, Student's name and the complete name of the sponsoring club, city and GFWC-MFWC District. See example below.
4. All work must be original, done within the last 12 months. Items previously entered in GFWC-MFWC contests are ineligible.
5. Any pastel or charcoal must be sprayed with a fixative or covered with transparent material.
6. Dimensions: Before matting, minimum size must be at least 8½ x 11 inches and maximum size must not exceed 20 x 24 inches.
7. Mats and frames: it is preferred that entries be matted or attached to a firm backing. Mats should be stiff enough to stand. Cover pictures with transparent materials to protect if desired. **DO NOT USE GLASS** on entries.

Youth Art Contest Identification Card:

Printable copies of the Identification Card can be found on the GFWC-MFWC website at https://www.gfwc-mfwc.org/pdf/GFWC_MFWC_Forms/Recurring/Youth_Art_Cards_2020.pdf.

Deadline:

Entries must be presented to the District Youth Contest Chairman or Arts/Craft Contest Chairman **before 9:15 a.m. on the morning of your District Convention.**

Youth Art Challenge Contest

This Youth Art Challenge is for students receiving no art instruction from private teacher(s) or certified art teacher; teachers giving art instruction in the self-contained classroom would fall in this category. The students who receive some type of professional art instruction will be considered only if they have never had an opportunity to participate in the MFWC Youth Art Contest. This competition focuses on low-incidence disability students who are considered "self-contained." Special education course codes begin with a 13. If a student has all course codes beginning with 13, the student is considered self-contained. The low incidence disabilities that may be considered self-contained include autism, deaf-blind, developmentally delayed, emotional disability, hearing impaired, intellectual disability, multiple disability, orthopedically impaired, traumatic brain injury, and visually impaired. This would not include students ruled eligible for special education services who might have an opportunity to take part in the GFWC-MFWC Youth Art Contest due to participation in a regular education classroom.

Teachers and/or special education supervisors must be allowed to choose the artwork to be presented for judging. Every effort must be made to protect the confidentiality of the students. Personally, identifiable information should be limited in any advertisement, newspaper article, or signage. It is important that parents are made aware that their child's name and artwork will be displayed at district and state competitions. Clubs should consider a signed parental consent form to be sure parents are made aware.

District first place entries will go directly to state level competition. First, second, and third place ribbons will be awarded in each division.

Divisions:

- Division 1 – Ages 3 - 5
- Division 2 – Ages 6 - 8
- Division 3 – Ages 9 - 12
- Division 4 – Ages 13 - 15
- Division 5 – Ages 16 - 21

Rules:

1. Entries must be sponsored by a GFWC-MFWC member club.
2. Each club may submit two entries in each of the five divisions.
3. Typewritten identification cards must be firmly attached to the back of each entry. The label should contain the following information: Student's name, Age, Division, and the complete name of the sponsoring club, city, and GFWC-MFWC district. See example below.
4. All work must be original, done within the last 12 months. Items previously entered in GFWC-MFWC contests are ineligible.
5. Any pastel or charcoal must be sprayed with a fixative or covered with transparent material.
6. Dimensions: Before matting, minimum size must be at least 8-1/2 x 11 inches and maximum size must not exceed 20 x 24 inches.
7. Mats and Frames: It is preferred that entries be matted or attached to a firm backing. Mats should be stiff enough to stand. Cover pictures with transparent materials to protect them if desired. Do not use glass on entries.

Youth Art Challenge Contest Identification Card:

Printable copies of the Identification Card can be found on the GFWC-MFWC website by using this link:

https://www.gfwc-mfwc.org/pdf/GFWC_MFWC_Forms/Youth_Art_Challenge_Contest_Cards.pdf.

Deadline:

Entries must be presented to the District Youth Contest Chairman or Arts/Craft Contest Chairman before **9:15 a.m. on the morning of your District Convention.**

Books Contests

Each District Chairman should judge the books according to the guidelines listed below. The same criteria will be used for state judging. General and Juniorette clubs are judged separately.

District Contest

All scrapbooks and yearbooks judged first place shall be taken by the GFWC-MFWC President to the State Books Chairman. The District Books Chairman is responsible for placing them in the GFWC-MFWC President's car. The District Book Chairman should make two lists of the books going forward, giving one to the GFWC-MFWC President and keeping one for herself. All other books must be picked up at the close of the District Convention by the sponsoring club.

State Contest

All entries in the state competition must be picked up at the designated time at the State Convention by the sponsoring club. If no one from the club is present, the District President should pick up all books from her District.

Scrapbooks

The purpose of the scrapbook is to preserve memories for future generations of your club's activities and achievements.

- a. Scrapbooks will be judged according to the following 5 classifications:
 - Classification A - Under 20 members
 - Classification B - 21 – 35 members
 - Classification C - 36 – 50 members
 - Classification D - 51+ members
 - Classification E – Digital (must follow the same entry rules as printed scrapbooks)
(Classification may be attached to the inside of front cover so as not to damage book.)
- b. Physical Aspects
 - Size not less than 8½ x 11
 - Cover (durable and stiff)
 - Identification on cover
 - a. Club
 - b. Town
 - c. District
 - d. Year, theme and dates of organization may also be used
- c. Contents
 - Pictures or listing of GFWC, GFWC-MFWC and District Officers
 - Pictures of club officers and members (Individual or group)
 - Club meetings (pictures, any information relating to program and publicity of meeting)
 - Club projects (pictures and publicity)
 - Conventions and special meetings
 - Letters relating to club activities
 - Record of awards received
 - Any club related material (newspaper, magazine articles or miscellaneous)
 - All pictures and material must be labeled
 - Contents covering period from January 1 through December 31 only
- d. Skill In Execution
 - Originality in following administration theme or selected theme.
 - Chronological sequence of programs and projects
 - Creative and attractive arrangement of pictures and materials
 - Variety of materials
 - Neatness (pictures and other materials cut straight/evenly, erasures complete, lines straight, etc.)
- e. Excellence of Copy
 - Adherence to style throughout book
 - Excellence of pictures, articles and materials (Remember- a picture is worth a 1000 words!)

Yearbooks

The purpose of a yearbook is to give a member as much information as possible concerning club, GFWC-MFWC and GFWC activities.

- a. Yearbooks will be judged according to the following classifications:
 - Classification A: Under 20 Members
 1. Bound
 2. Looseleaf
 - Classification B: 21-35 Members
 1. Bound

2. Looseleaf
 - Classification C: 36 – 50 members
 1. Bound
 2. Looseleaf
 - Classification D: 51+ members
 1. Bound
 2. Looseleaf
 - Notes:
 1. Classification maybe attached to the inside cover so as not to damage cover
 2. Example of classification: A club with 31 members submits a looseleaf book, the class is B-2
- b. Physical Aspect
 - i. Size – easily handled
 - ii. Identification on cover
 1. Club
 2. Town
 3. District
 - iii. Print – easy to read
 - iv. Margin – uniform
- c. Contents
 - Club officers, chairmen and committees listed
 - GFWC, GFWC-MFWC and District officers listed (These can be found in the Plans issue of the *Mississippi Clubwoman* and the GFWC-MFWC Handbook.)
 - Club Roster (May include address and telephone number)
 - Programs completely developed, listing date, location, speaker and Federation programs as well as responsibilities of any members. Other information may also be included.
 - Club motto, colors and flower (if club has them)
 - Collect
 - Constitution and Bylaws
 - Adherence to GFWC and GFWC-MFWC theme and cooperation with Federation objectives
 - Conventions (dates and locations)

Postmark Deadline:

Entry must be postmarked by **February 15** of each year to the District Book Chairman. Please note: if the postmark deadline falls on a Sunday or a Holiday, the application/form must be postmarked prior to postmark date.

Mail To:

Mail entries to your District Book Chairman.

GFWC-MFWC “Club of the Year” Award

An award is given annually to the club with the best overall record in the club work completed during the calendar year (January 1 through December 31), including:

1. Projects and programs in all Community Service Programs (Art, Conservation, Education, Home Life, International Outreach and Public Issues), GFWC Signature Program: Domestic Violence Prevention & Awareness and Prevention, GFWC Juniors’ Special Program: Advocates for Children.
2. Definite results from community projects undertaken in an effort to better the community.

3. Percentage of membership participating in, and amount of time and money contributed by club members.
4. Judging will be based on points scored on:
 - a. GFWC-MFWC Awards won in GFWC Signature and Juniors' Special Programs
 - b. GFWC-MFWC Awards won in Community Service Programs
 - c. GFWC-MFWC Awards won in Advancement Areas

GFWC-MFWC "Clubwoman of the Year" Award

The "Clubwoman of the Year" Award is the highest honor presented annually at the District and State levels to an outstanding GFWC-MFWC member. The award is given on the District and State levels to the Clubwoman who, in the opinion of the judges, has given of herself and truly exemplifies the Mississippi Federation Clubwoman. The nominee should be a club member who has served her club and her community through her club. Her club and her community must be better because she is an active volunteer.

Nomination materials will not be returned. Judging will be done by GFWC members from another state. The State winner will be chosen from among the District winners. All clubs are encouraged to empower the difference in the life of their members by nominating and honoring a clubwoman to represent their respective club.

1. Entries will be judged on the following criteria:
 - a. The entry must cover work done by the nominee for one year, January 1 through December 31 of the current year.
 - b. The nominee must have been selected "Clubwoman of the Year" by her club and must presently be an active member of her club. There can be only one entry from a club. Previous state winners and members of the Executive Committee are ineligible for this award.
 - c. Entry must be in a bound, typed form using one side of the paper only. Pages should be letter size (8½ x 11) and type should be double-spaced.
2. The entry must include the following:
 - a. On page 1:
 - i. Name, address and photograph of the nominee
 - ii. Name of Club
 - iii. Town
 - iv. District Name
 - v. Signature of Club President
 - vi. Past club work and accomplishments should be listed to help judges evaluate a sincere and continuing interest in the Federation.
 - b. The written portion telling about the nominee's family, children, interest, hobbies, civic and church work may be up to 5 pages in length.
 - c. Supportive materials such as newspaper clippings, snapshots, and letters from civic leaders may be included, not to exceed 8 pages.

To Apply:

Any entries that do not meet the above criteria will not be submitted for judging.

Postmark Deadline:

Entry must be **postmarked by February 10** of each year. Please note: if the postmark deadline falls on a Sunday or a Holiday, the application/form must be postmarked prior to postmark date.

Mail To:

Mail entries to Theresa Buntyn, GFWC-MFWC President.

GFWC-MFWC "Juniorette of the Year" (JOY) Award

The "Juniorette of the Year" Award is the highest honor presented annually at the State level to an outstanding GFWC-MFWC Juniorette member. The award is given to the Juniorette who, in the opinion of the judges, has given of herself and truly exemplifies the Mississippi Federation Juniorette. The nominee should be a presently active club member who has served her club and her community. There can be only one entry from a club. Previous state winners are ineligible for this award.

Judging will be done by GFWC members from another state. Juniorette Advisors are encouraged to recognize an extraordinary Juniorette by nominating them for "Juniorette of the Year" Nomination materials will not be returned.

Each entry must be in a typed form using one side of the paper only. Pages should be letter size (8½ x 11) and type should be double-spaced. The entry must include the following:

1. On page 1:
 - Name, address and photograph of the nominee
 - Name of Club
 - Town
 - District Name
 - Signature of Juniorette Advisor
 - Past club work and accomplishments should be listed to help judges evaluate a sincere and continuing interest in GFWC-MFWC and volunteerism.
2. Next, the written portion could include information about the nominee's family, interests, hobbies, college plans, school activities, community and church work, maybe up to 5 pages in length. The entry must tell about work done by the nominee for one year, January 1 through December 31 of the current year.
3. Supportive materials such as newspaper clippings, snapshots, and letters from community leaders may be included, not to exceed 8 pages.

To Apply:

Any entries that do not meet the above criteria will not be submitted for judging.

Postmark Deadline:

Entry must be postmarked by **February 10** of each year. Please note: if the postmark deadline falls on a Sunday or a Holiday, the application/form must be postmarked prior to postmark date.

Mail To:

Mail entries to Theresa Buntyn, GFWC-MFWC President.

MS Leadership Education and Development Seminar (MS LEADS)

MS LEADS training program identifies members at the grassroots level who have the potential and desire to assume leadership positions in GFWC within their local club and beyond. Participation in LEADS provides these members with the capabilities, confidence, and commitment to serve with distinction.

The training program includes workshops, seminars, activities, and networking opportunities. This Seminar is sponsored by the Malone-Sisk Education/Leadership Endowment Fund.

Program topics vary, according to current trends and issues, and may include but are not limited to:

- Presentations on conflict resolution, mediation, public speaking, time management and parliamentary procedure
- Explanation of GFWC and GFWC-MFWC resources, materials, and assistance
- Discussions on GFWC and GFWC-MFWC policies, procedures, and parliamentary law
- Tips and techniques for pursuing leadership opportunities

GFWC Leadership Education and Development Seminar (GFWC LEADS)

Selection Process:

Each state Federation annually selects one member to serve as its representative to GFWC LEADS to be held in conjunction with the GFWC Annual International Convention. Each year, every GFWC-MFWC club, may select one member to be considered to represent GFWC-MFWC at GFWC LEADS.

CRITERIA FOR LEADS PARTICIPATION:

A LEADS candidate should:

- Demonstrate leadership capabilities at the club level as an active club president, club officer, or club project/committee chairman
- Exhibit a commitment to the Federation
- Exhibit an understanding of the GFWC mission of community service, illustrated by programs/projects in which she is/has been involved
- Demonstrate leadership skills, including but not limited to organization, responsibility, trustworthiness, enthusiasm, flexibility
- Exhibit an interest and willingness to pursue higher leadership positions in the Federation
- Understand and accept potential expenses involved in participation
- Not have held an elected position at or beyond the state level
- Not have attended a previous GFWC LEADS program. Members are eligible to attend only once. This only applies GFWC LEADS program. Participants can apply and attend more than one GFWC-MFWC LEADS programs.

Local clubs are encouraged to underwrite a portion of attendees' expenses (e.g., travel or convention registration). LEADS attendees are responsible for a portion of their expenses as an affirmation of their personal commitment.

Additional Information:

Additional information can be found at GFWC, Members Portal, My Digital Library, Resources, Letter L, LEADS. Do not use the LEADS-Application-Form 2020-2022.doc. Use the form below to apply for MS LEADS.

To Apply:

Complete the MS LEADS Application Form. Application Form can be found on the GFWC-MFWC website at http://www.gfwc-mfwc.org/pdf/GFWC_MFWC_Forms.

Postmark Deadline:

Application form and supporting documents must be postmarked by **February 10** of each year. Please note: if the postmark deadline falls on a Sunday or a Holiday, the application/form must be postmarked prior to postmark date.

Mail To:

Mail completed application form, 2 letters of support from active GFWC-MFWC club members and a "head shot" photo to Meri F. Newell, MS LEADS Chairman. Mail a copy of the completed application form only to Theresa Buntyn, GFWC-MFWC President.

GFWC-MFWC Challenge Grant

The GFWC- MFWC has established Challenge Grants to be awarded to teachers in the State of Mississippi to benefit students with Learning Disabilities. These grants will range from \$50-\$300 and will be given at the discretion of the Committee formed to administer the grants. These grants must be used in the classroom, i.e., additional supplies, implementation of new programs, advanced technology, etc. The primary criterion for these grants is need. These grants are not available to be used for continuing education for teachers; all money must be used to benefit students. The grant recipient(s) will be invited to attend the State Convention in April to receive recognition if possible. Grant applicants do not have to be a member of the GFWC-MFWC, but they must be sponsored by an active club member and/or club.

To Apply:

Complete the GFWC-MFWC Challenge Grant Application Form. Application Form can be found on the GFWC-MFWC website at http://www.gfwc-mfwc.org/GFWC_MFWC_Contest_Challenge_Grant.html. Any entries that do not meet the above criteria will not be submitted for judging.

Postmark Deadline:

Entry must be postmarked by **February 1** of each year. Please note: if the postmark deadline falls on a Sunday or a Holiday, the application/form must be postmarked prior to postmark date.

Mail To:

Mail completed application form to Cherry Moon, GFWC-MFWC Challenge Grant Chairman.

Hebron Memorial Scholarship

A scholarship, known as the Hebron Memorial Scholarship, shall be maintained by the GFWC-MFWC. Only female residents of Mississippi shall be eligible to apply. This scholarship shall be a grant, and only one may be granted during one year, except with the approval of the Executive Committee. The holder of the scholarship is eligible for consideration by the Scholarship Committee to receive the grant for an additional year or years.

The following rules shall govern this scholarship:

1. The maximum amount of this grant shall be one thousand dollars (\$1,000).
2. The applicant must meet the following requirements:
 - a. Application must be made in writing to the Chairman of the Hebron Memorial Scholarship Committee and be postmarked February 1 for use within that year.
 - b. The applicant must be a resident of Mississippi, having graduated from an accredited high school with a good scholastic average; or in the case of an applicant for graduate school, she must have graduated from an accredited college and must be attending an accredited graduate school.
 - c. The applicant must be endorsed by three (3) members of the GFWC-MFWC.
 - d. The application must be accompanied by recommendations from three (3) other persons related to scholarship, character, and qualities of leadership.
 - e. The applicant must signify her intention of completing her degree within a four-year period.
3. Preference will be given to areas of service where it is felt there is the need in the state.

4. This scholarship shall not be limited to any particular year in college but is limited to Mississippi Institutions of Higher learning. The scholarship must be sent directly to the Institution the grantee plans to attend. The Scholarship Grantee should attend the State Convention or State Board Meeting to receive recognition.

To Apply:

Complete the Hebron Memorial Scholarship Application Form. Application Form can be found on the GFWC-MFWC website at http://www.gfwc-mfwc.org/GFWC_MFWC_Contest_Hebron_Scholarship.html. Any entries that do not meet the above criteria will not be submitted for judging.

Postmark Deadline:

Application must be postmarked by **February 1** of each calendar year. Please note: if the postmark deadline falls on a Sunday or a Holiday, the application/form must be postmarked prior to postmark date.

Mail To:

Mail application to Lorri Stockstill, Hebron Memorial Scholarship Chairman.

GFWC-MFWC Sarah Peugh Butterfly Scholarship

The Sarah Peugh Butterfly Scholarship will be awarded each spring to a GFWC-MFWC Juniorette club member who will be graduating from high school in the same year.

The Sarah Peugh Butterfly Scholarship recipient will be selected by a panel to include GFWC-MFWC President and two representatives of the Education Program. The recipient will be notified at least one week prior to the State Convention.

The scholarship recipient will inform GFWC-MFWC Treasurer of the college or university she will attend in the same year as her high school graduation. The GFWC-MFWC Treasurer will forward a check not to exceed one thousand dollars (\$1,000) to the educational institution to be credited to the scholarship recipient's account.

The scholarship recipient will receive a framed certificate. The scholarship recipient will receive a specially designed butterfly trophy, appropriately engraved, if furnished by Sarah Peugh or other individuals interested in continuing this scholarship. Public announcement of the scholarship recipient will be made at the GFWC-MFWC Convention if the recipient is able to attend, with presentation of the framed certificate to be made at a time and location convenient to the recipient and the GFWC-MFWC President.

This scholarship shall remain available as long as funding is provided by interested individuals and clubs. The amount of the scholarship will increase in multiples of fifty dollars (\$50) if interested individuals or clubs wish to donate funds.

Applications must include the following information:

- a. Name, address, age and photograph of applicant
- b. Name and address of applicant's parents
- c. Name of GFWC-MFWC Juniorette club applicant holds membership in and number of year's applicant has been an active member
- d. Name of high school from which applicant is graduating and grade average
- e. List of ACT Assessment scores
- f. Leadership activities: appropriate high school/community and Juniorette club activities, including all awards and positions of leadership

- g. A letter of recommendation from the GFWC-MFWC sponsoring club advisor to the Juniorette Club in which the applicant holds membership.
- h. A letter of recommendation from the GFWC-MFWC sponsoring club president

To Apply:

Applications for this scholarship are to be made by letter to the GFWC-MFWC State President. Completed the Sarah Peugh Butterfly Scholarship application form. Application form can be found on the GFWC-MFWC website at http://www.gfwc-mfwc.org/GFWC_MFWC_Contest_Butterfly_Scholarship.html. Any entries that do not meet the above criteria will not be submitted for judging.

Postmark Deadline:

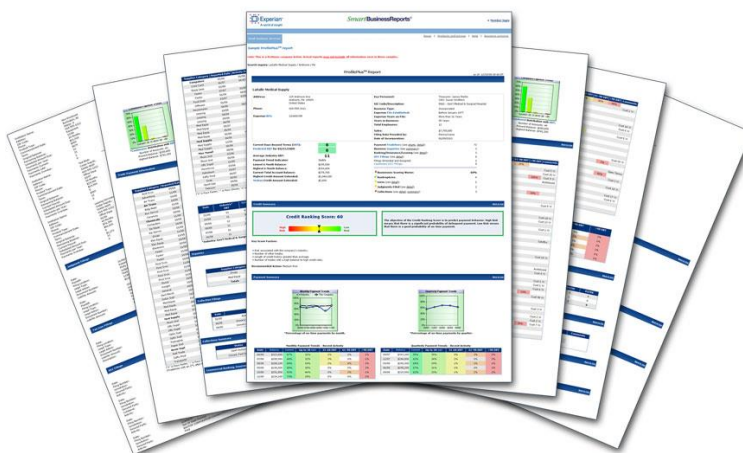
Application must be postmarked by **March 1** of each calendar year. Please note: if the postmark deadline falls on a Sunday or a Holiday, the application/form must be postmarked prior to postmark date.

Mail To:

Mail completed application and supporting materials to Theresa Buntyn, GFWC-MFWC President.



Resource Materials and Reporting Forms



GFWC RESOURCES

GFWC-Clubwoman Magazine

GFWC *Clubwoman Magazine* is the premier publication of the General Federation of Women's Clubs, and one of the most useful and beneficial communication tools we have to inform and educate our members. Published quarterly, the magazine is a source for insightful and informative content that keeps subscribers in tune with all things GFWC. In addition, *Clubwoman Magazine* promotes regular features each issue, such as:

- **President's Letter:** Words of wisdom from the GFWC International President
- **Bits and Bites:** All the news that's fit to print – in bite-sized bits!
- **Call To Convention:** Every March/April issue of *Clubwoman Magazine* contains this essential feature, which highlights the most up-to-date info on the upcoming GFWC Annual Convention in June

Download directly from the GFWC Members Portal, My Digital Library, Resources, C, Clubwoman Magazine.

GFWC Recognition Pins

GFWC Recognition Pins are available to honor clubwomen who have brought GFWC's mission of volunteer service to their communities for 50 (Gold) or 75 (Jubilee) years. These pins are available free of charge. Club presidents can order the pin by going to GFWC Members Portal, My Digital Library, Resources, Letter P, Gold Pin Order Form.

GFWC 25-Year Silver Pins, along with our 5, 10, 15, 20, 30, 40, 45, 55, 60, 65 and 70-year Member Pins, are part of our member loyalty recognition program, which honors our members who have served as community volunteers for five years and beyond. Order directly from the GFWC Members Portal, Marketplace, Pins & Buttons.

Club Anniversary Order Form

Your club can order a Club Anniversary Certificate from GFWC for Milestone Anniversaries for 25, 50, 60, 70, and every 5 years thereafter. To receive your Club Anniversary certificate, complete Club Anniversary Order Form available at GFWC Members Portal, My Digital Library, Resources, Letter C, Club Anniversary Order Form.pdf.

GFWC Affiliate Organization

Updated

GFWC is proud to partner with a number of dynamic and impactful organizations. Together, we work to improve our communities and better our world. Be sure to check out Affiliate Organizations Information at GFWC Members Portal, My Digital Library, Resources, Letter A, Affiliate Organization or My Digital Library, Resources, Letter C, Club Manual, Affiliate Organizations for all contact information and donation requirements.

PLATINUM

Heifer International. www.Heifer.org



For more than 65 years, Heifer International has provided gifts of livestock and environmentally-sound agricultural training to improve the lives of those who struggle daily for reliable sources of food and income. Since 1944, Heifer has helped 15 million families in more than 125 countries through training in livestock development and livestock gifts that multiply. Tanzania School Milk Project is GFWC's premier project for Heifer this year. Through this project, school children in the southern highlands of Tanzania will receive nutritious, packaged milk – empowering them to focus on learning instead of hunger.

Hope For Justice. www.hopeforjustice.org/GFWC

NEW



Hope for Justice and General Federation of Women's Clubs (GFWC) share a common mission and vision: to live in a world free from trafficking. We see a world where every human is free and equal. We believe every person can be a force for good. Human trafficking is a global problem and Hope for Justice brings a global solution. We target our resources where they will have the most impact and help the most people. We want to create nations and societies that are hostile to trafficking - because what you tolerate, you will never change. By collaborating with GFWC across the country, we can be the generation that ends human trafficking by embedding our education, awareness, and learning programs, rescue and aftercare support services, and expert thought leadership deeper into all communities. YOU can be a part of ending human trafficking.

United Nations Foundation, Shot@Life. www.ShotatLife.org



Shot@Life, a United Nations Foundation's campaign, seeks to educate, connect, and empower Americans to champion vaccines in order to save children in developing countries. Every 20 seconds, a child dies of a vaccine-preventable disease like pneumonia, diarrhea, measles, and polio. You can help save a child's life by encouraging, learning about, advocating for, and donating vaccines.

St. Jude Children's Research Hospital. <https://www.stjude.org/>



St. Jude Children's Research Hospital is leading the way the world understands, treats and defeats childhood cancer and other deadly diseases. Everything the organization does is centered on finding cures and saving children. And families never receive a bill from St. Jude.

St. Jude continues the vision of its founder, Danny Thomas, that no child is denied treatment based on race, religion, or a family's ability to pay. By sharing our knowledge freely and exchanging ideas openly, St. Jude inspires more collaboration between doctors and researchers worldwide, and, as a result, more lifesaving treatments for children everywhere. Treatments invented at St. Jude have helped push the overall childhood cancer survival rate from 20 percent to 80 percent since it opened 50 years ago.

GOLD

Canine Companions. www.canine.org

NEW



The concept of service dogs for people with physical disabilities began with Canine Companions in 1975 in a home office and a garage. In the 47 years since, thanks to the unparalleled generosity and dedication of our supporters such as the GFWC, we've grown tremendously. One in four Americans live with a disability and Canine Companions is here to help. As the leader of the service dog industry, we enhance independence for children, adults, and veterans with disabilities through expertly trained service dogs. We use cutting-edge research and training programs to ensure the success and quality of our teams. Canine Companions is the largest provider of service dogs in the world and all follow-up support is provided free of charge to recipients.


Healthy Moms. Strong Babies. www.marchofdimes.org

Updated



March of Dimes leads the fight for the health of all moms and babies. We imagine a world where every mom and baby is healthy regardless of wealth, race, gender, or geography. Every family deserves the best possible start. But that's just not the case. The U.S. remains among the most dangerous developed nations for childbirth – with COVID-19 only elevating the stakes and exacerbating persistent health disparities.

Operation Smile. www.OperationSmile.org

 Operation Smile is an international children's medical charity focused on restoring children's smiles through performing surgery on facial deformities such as cleft lip and cleft palate. They are dedicated to raising awareness of this life-threatening issue and providing lasting solutions that will allow children to be healed, regardless of financial standing, well into the future. Operation Smile's free surgeries and medical missions are made possible by the thousands of volunteers and donors, throughout the world, who generously contribute time, talent and resources.

U.S. Fund for UNICEF. www.UNICEFUSA.org/GFWC



For more than six decades, GFWC has supported UNICEF, the United Nations Children's Fund, in its efforts to ensure the world's most vulnerable children have access to health, and immunization, clean water, nutrition, education, emergency and disaster relief, and more.

CLUB RESOURCES & FORMS FOR GFWC-MISSISSIPPI FEDERATION OF WOMEN'S CLUBS, INC.

GFWC-MFWC Ways and Means

- President's Special Project Items:

| Item | Cost |
|-------------|---------------------------------|
| ▶ Sign | 20.00 |
| ▶ Note card | 10 for \$5.00 12 for \$10.00 |
| ▶ Bookmarks | TBD |
| ▶ T-shirts | TBD |

- GFWC-MFWC Items

| | |
|----------------------------------|---------------|
| ▶ GFWC-MFWC Note cards | \$10.00 |
| ▶ GFWC-MFWC Member Pin | \$5.00 |
| ▶ GFWC-MFWC Membership Brochures | 10 for \$5.00 |

For a current listing of all GFWC-MFWC Ways and Means items for sales with pictures, please refer to our website at http://www.gfwc-mfwc.org/GFWC_MFWC_MarketPlace.html. To order any GFWC-MFWC Ways & Means items from our website, please contact Amy Jacobs and Abby May, GFWC-MFWC Ways & Means Co-Chairmen. When at meetings, see the twins (Amy and Abby) to purchase Ways and Mean items.

GFWC-MFWC Change of Contact Information Form

Have you moved, changed your physical address, mailing address, phone numbers or email address, if so, please complete and submit a Change of Contact Information Form to Lisa A. Harris, Media/Communication and Technology Coordinator.

A fillable Change of Contact Form is available at GFWC-MFWC at https://www.gfwc-mfwc.org/pdf/GFWC_MFWC_Forms/Recurring/GFWC_MFWC_Change_Contact_Information_Form.pdf

GFWC-MFWC Club History Report Form.

The Club History Form should be filled out once a year and is a report of your club's activities for the prior club year.

Instructions:

Completed the Club History Report Form. A fillable Club History Report Form is available at GFWC-MFWC website at https://www.gfwc-mfwc.org/pdf/GFWC_MFWC_Forms/2022_2024/MFWC_Club_History_2022_fillable.pdf.

Postmark Deadline:

Club History Report Form must be postmarked by **March 1** of each calendar year. Please note: if the postmark deadline falls on a Sunday or a Holiday, the application/form must be postmarked prior to postmark date.

Mail To:

Mail or email completed Club History Form to Libby D. Everett, GFWC-MFWC Historian.

GFWC-MFWC State Dues Form

The GFWC-MFWC Dues Form should be completed and mailed with a copy of the club roster with the names and mailing address of each member in alphabetical order. It would be helpful if the club roster included telephone number(s) and email address of each member. Please identify new members, club president and club treasurer on your roster. Checks should be made payable to GFWC-MFWC.

Form:

A fillable GFWC-MFWC Dues Form is available at GFWC-MFWC website at https://www.gfwc-mfwc.org/pdf/GFWC_MFWC_Forms/2022_2024/2022-2024_GFWC_MFWC_Dues_Form_V2.pdf.

Postmark Deadline:

If you wish to be recognized as an Honor Club, GFWC-MFWC Dues Form and dues must be postmarked by **November 1** of each year. If your club does not pay dues by **January 1** of each year it will not have reports judged and will not be eligible for awards at conventions. Please note: if the postmark deadline falls on a Sunday or a Holiday, the application/form must be postmarked prior to postmark date.

Mail To:

Mail completed GFWC-MFWC Dues Form, roster and check to Becky W. Watkins, GFWC-MFWC Treasurer.

GFWC-MFWC District Dues

The GFWC-MFWC District Dues should be mailed with a copy of the club roster with the names and mailing address of each member in alphabetical order. It would be helpful if you would include telephone number(s) and email address of each member. Please identify new members, club president and club treasurer on your roster. Checks should be made payable to your district.

Form:

A GFWC-MFWC Dues Form is not available for District Dues.

Mail To:

Mail completed GFWC-MFWC District Dues check to your District Treasurer.

Northern

Pamela R. Maxwell
31 Caroline Cove
Cleveland, MS 38732
(662) 497-2575 – c
prmaxwell@yahoo.com

Central

Lisa A. Harris
822 SCR 115 South
Raleigh, MS 39153
(601) 940-1519
lisaharris@outlook.com

Southern

Jana Owen
1 Pine Hill Circle
Gulfport, MS 39057
(228) 697-0086 – c
jarrellj@bellsouth.net

GFWC-MFWC Reporting Guidelines for 2022-2024 Administration

1. To report your club's statistics in each of the Community Service Programs (CSP) and Advancement Plans (AP), complete one GFWC-MFWC Report Cover Sheet for CSP and AP. Activities for Affiliate Organization, such as, UN Foundation Shot@Life, Operation Smile and others will be included in the Community Service Program (CSP) area for documentation purposes and no longer be a separate report. That is all you are **required** to do for reporting. You can improve your chances of winning an award by submitting a narrative report and supporting material in each Community Service Program and Advancement Plan. Reports should cover club activities from January 1 through December 31 of the previous year.
2. Narrative reports are limited to three single-spaced pages. Only the front side of a page can be used...no printing on both sides of the paper. Narrative information should include if applicable:
 - WHY did you help them?
 - WHAT did YOU do?
 - OUTCOME or Impact on the Community or state
 - Project Hours (Number of actively involved members x hours each)
 - Monetary donations from Clubs or Members
 - In-Kind Donations from Members
3. 2022-2024 Definitions from GFWC for State Statistical form
 - Community Service Projects are the programs and projects members initiate and participate in to serve their communities, including projects with GFWC Affiliates.
 - Number of Projects is the numerical account of the programs and projects initiated and participated in by the clubs in your State.
 - Volunteer Hours is the amount of time that members worked on club approved programs and projects.
 - Dollars Donated is the monetary amount given to programs and projects.
 - In-Kind Donations reflect the monetary value for goods provided to programs and projects. Download the latest copy from the GFWC Member Portal, My Digital Library, Resources, Letter I, In-Kind Donation Guide.pdf.
 - Dollars Spent are costs incurred by members, clubs, or State Federations to achieve Advancement Plans goals. (Leadership, Communication and Public Relations, Legislative and Public Policy, Fundraising and Development)
 - Dollars Raised reflects the dollars earned from fundraising and development programs and projects.
4. Supporting material is limited to three pages. Only the front side of a page can be used...no printing on both side of the paper. Supporting material may include newspaper clippings, pictures of members/projects, resolutions, certificates, minutes from other organizations, thank you notes, correspondence, copies of checks, etc.
5. You **must** use a Report Cover Sheet with **each report**. Attach the completed cover sheet to the narrative and supporting material. Please DO NOT staple pages together, use a paper clip.
 - Our MFWC report form is three pages. Print out and return all pages for each area.
6. Other programs are the GFWC Signature Program: Domestic & Sexual Violence Awareness and Prevention and GFWC Juniors' Special Program: Advocates for Children. Report club statistics for these programs on the appropriate Report Cover Sheet, using one cover sheet for each of these areas.
7. Cross reporting is not allowed with the **exception** of three areas.
 - a) The GFWC-MFWC President's Special Project (PSP) "*Getting Back To Our Roots*" can be reported under both the GFWC-MFWC PSP and GFWC Education CSP.
 - b) State Institutions can be reported under both GFWC-MFWC State Institution and one of the following GFWC CSP

- i. Mississippi State Schools for Deaf and Blind, Ellisville State School and other State Schools can be reported under Education and Libraries.
 - ii. Mississippi State Hospital at Whitfield, MS and other State Hospitals can be reported under Health and Wellness.
 - iii. State Veteran's Homes projects can be reported under Civic Engagement and Outreach.
- c) Mississippi Public Broadcasting can be reported under both GFWC-MFWC MPB and Education and Libraries.
8. These reports GFWC-MFWC President's Special Project (PSP) **"Getting Back To Our Roots"**, GFWC-MFWC Special Emphasis: State Institutions and Mississippi Public Broadcasting, have their own report forms; however, clubs will still need to complete one Report Cover Sheet for each of these when submitting reports.
9. In order for your club's reports to be judged:
 - Club dues **must be paid** by January 1st of each year
 - Reports must be **postmarked** on or before February 1st

Special Reporting Tips

1. Special Tips
 - a. Read your guidelines.
 - b. Follow the guidelines. This is what makes award-winning clubs.
 - c. Report everything that your club does – if unsure where to report, put it in the place where it makes the most sense.
 - d. Advancement Plans are an excellent place to win awards since many people do not report in these areas.
 - e. The number of members involved in the project cannot exceed the number of club members – even if you work with another group – you just have X number of members.
 - f. 1935 Society and 1734 Society go under Women's History and Resource Center.
 - g. **HOBY** should be included in the Education & Libraries CSP report.
 - h. **ESO**. Projects involving ESO should be reported under Education & Libraries CSP, adhering to GFWC guidelines for ESO. ESO Books Read (from the GFWC ESO List and the MFWC ESO list) and Hours should be reported on the Statistical Form under ESO.
 - Epsilon Sigma Omicron Epsilon Sigma Omicron is an honorary educational society open to all per-capita dues paying GFWC members. ESO provides clubwomen with a structured reading program that is educational and stimulates a desire for self-improvement. ESO materials are available online at GFWC Member Portal, My Digital Library, Resources, Letter E, Epsilon Sigma Omicron Reading List.
 - i. **Youth Art** should be reported under Arts & Culture.
 - j. In order to "count" for reporting, the activity must be a club-sanctioned event or a club approved event or project.
 - k. Several clubs put monthly report forms for general members in their handbook and have a door prize drawing for those who turned in a report form for that month.
 - l. You may split report, i.e., funds raised, publicity, and the project – but you cannot count in three places. Please make a note when you split report (for example: dollars raised reported under Fundraising).
2. Judging Process
 - a. State Chairmen will judge your report. Neither the GFWC-MFWC President nor GFWC-MFWC Vice President judges any reports.
 - b. Awards will be given to all areas reported on the GFWC-MFWC Statistical report. There will not be separate awards for affiliates as they are included in the CSP reports.

- c. Chairpersons do not judge reports in their district.
- d. Awards for five placements or top five scores will be granted to each District for the CSP, Advancement Plans, and GFWC and MFWC Signature programs. Clubs will be awarded these five places according to the top scores at each District Conventions in 2021 and 2022. Clubs will also be awarded at the State level for the top five scores at the State Convention in April.

Report Forms:

A fillable GFWC-MFWC Report Form is available at GFWC-MFWC website at this location http://www.gfwc-mfwc.org/GFWC_MFWC_Forms.html. Be sure to pay close attention to the instructions at the bottom of the form. Be sure to check our website at the end of December for the latest Reporting Form.

Postmark Deadline:

Reports must be postmarked by **February 1**. Please note: if the postmark deadline falls on a Sunday or a Holiday, the application/form must be postmarked prior to postmark date.

Mail To:

Mail or email 1 copy of club reports via first class mail to Theresa Buntyn, GFWC-MFWC President. Send copies of the cover sheet and narrative for each report. Do not send supporting material.

Email or Mail 3 copies of club reports via first class mail to Meri F. Newell, GFWC-MFWC Vice President. Send copies of cover sheet, narrative and supporting material for each report.

GFWC-MFWC Special Project Forms

The GFWC-MFWC has forms available for its Special Projects. These forms should be included in your yearly reporting package.

Report Forms:

Forms listed below can be downloaded from the GFWC-MFWC website.

- Mississippi Public Broadcasting Report Form can be downloaded using this link http://www.gfwc-mfwc.org/GFWC_MFWC_Forms.html.
- State Institutions Report Form can be downloaded using this link http://www.gfwc-mfwc.org/GFWC_MFWC_Forms.html.
- President's Special Project form can be downloaded in December 2023 from our website.

Postmark Deadline:

Reports should be included in your GFWC-MFWC Reporting Package which is due on **February 1st**. Please note: if the postmark deadline falls on a Sunday or a Holiday, the application/form must be postmarked prior to postmark date.

Special Note for All Applications/Forms/Reports

Please note: if the postmark deadline for an application/form/reports falls on a Sunday or holiday, the application/form/ reports **MUST** be postmarked prior to postmark date.

HISTORY OF MARY STEWART'S COLLECT FOR CLUBWOMEN

For many years, women's clubs in Canada, United States, Britain and other countries have used a prayer for the opening or closing ceremonies of their meetings. Sometimes it is simply read by one member, at others it is repeated in unison by all those present. They have usually called it Our Creed or The Club Women's Creed and as such it is widely known and popular on this continent, especially in small towns and rural districts. Widespread usage has resulted in some changes. The author gave it a title: "Collect For Club Women," when it first appeared in an obscure corner of a well-known American magazine.

Written in 1904 as a prayer for the day by Mary Stewart, a high school principal in Longmont, Colorado, and a member of women's clubs of town and country. "I called it a 'Collect for Club Women' because I felt that women working together, with wide interests in large ends, which was a new thing under the sun and that, perhaps they had need for a special petition and meditation of their own."

Collect For Clubwomen

Keep us, O God, from pettiness;
let us be large in thought, in word, in deed.

Let us be done with fault-finding and
leave off self-seeking.

May we put away all pretense and meet each
other face to face -- without self-pity
and without prejudice.

May we never be hasty in judgment and
always generous.

Let us take time for all things;
make us to grow calm, serene, gentle.

Teach us to put into action our better impulses,
straightforward and unafraid.

Grant that we may realize it is the little
things that create differences,
that in the big things of life we are at one.

And may we strive to touch and to know the great,
common human heart of us all, and
O Lord God, let us forget not to be kind!

Mary Stewart
1904